



**Australian
Bureau of
Statistics**

**June Quarter 1994
Employed Wage and
Salary Earners
Australia**

Catalogue No. 6248.0

EMBARGOED UNTIL 11.30 A.M. 7 DECEMBER 1994

**EMPLOYED WAGE AND SALARY EARNERS
AUSTRALIA
JUNE QUARTER 1994**

RICHARD MADDEN
Acting Australian Statistician

AUSTRALIAN BUREAU OF STATISTICS

CATALOGUE NO. 6248.0

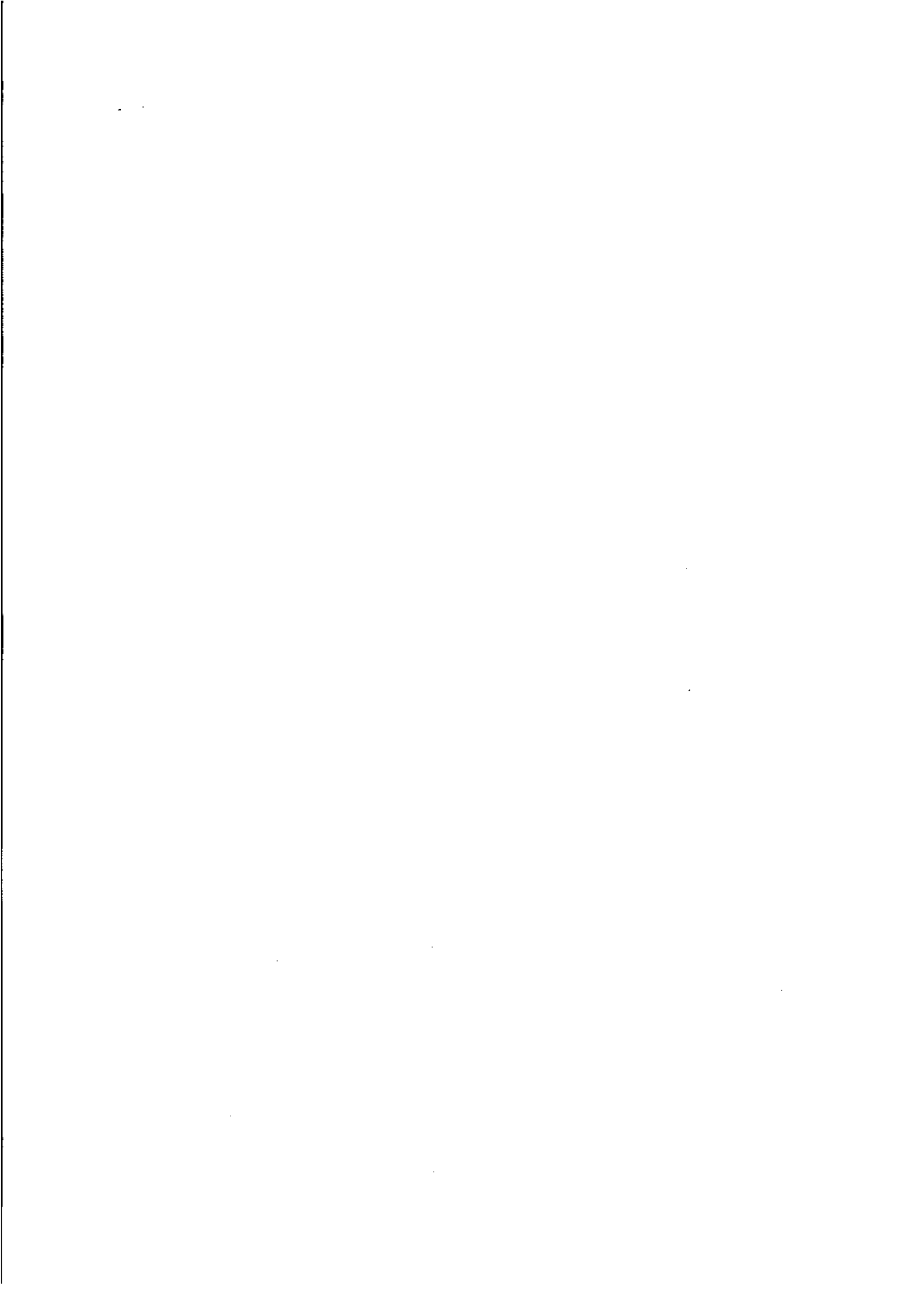
© Commonwealth of Australia 1994

CONTENTS

<i>Table</i>		<i>Page</i>
..	Summary of Findings	1
1	Employed wage and salary earners, States and Territories, persons — trend series	4
2	Employed wage and salary earners, States and Territories, persons — seasonally adjusted series	5
3	Employed wage and salary earners, States and Territories, persons — original	6
4	Gross Earnings, States and Territories, sectors — original	7
Employed wage and salary earners—		
5	States and Territories, sectors — trend series	8
6	States and Territories, sectors — seasonally adjusted series	9
7	States and Territories, sectors — original	10
8	States and Territories, public institutional sector — original	11
9	Australia, public institutional sector and industry, persons — original	12
10	Australia, public institutional sector and industry, gross earnings — original	12
11	Full-time and part-time, May 1994 — original	13
12	Australia, industry — trend series	14
13	Australia, industry — seasonally adjusted series	14
14	Australia, sector and industry — original	15
15	New South Wales, sector and industry — original	18
16	Victoria, sector and industry — original	19
17	Queensland, sector and industry — original	20
18	South Australia, sector and industry — original	21
19	Western Australia, sector and industry — original	22
20	Tasmania, sector and industry — original	23
21	Northern Territory, industry — original	24
22	Australian Capital Territory, industry — original	24
23	Private sector, employer unit size — original	25
..	Explanatory Notes	26
<i>Appendixes</i>		
1	Technical Note	30
2	Glossary	33

INQUIRIES

- *for further information about statistics in this publication and the availability of related unpublished statistics, contact Mr Ken Clarke on Perth (09) 360 5141 or any ABS State office.*
 - *for information about other ABS statistics and services please refer to the back page of this publication.*
-



SUMMARY OF FINDINGS

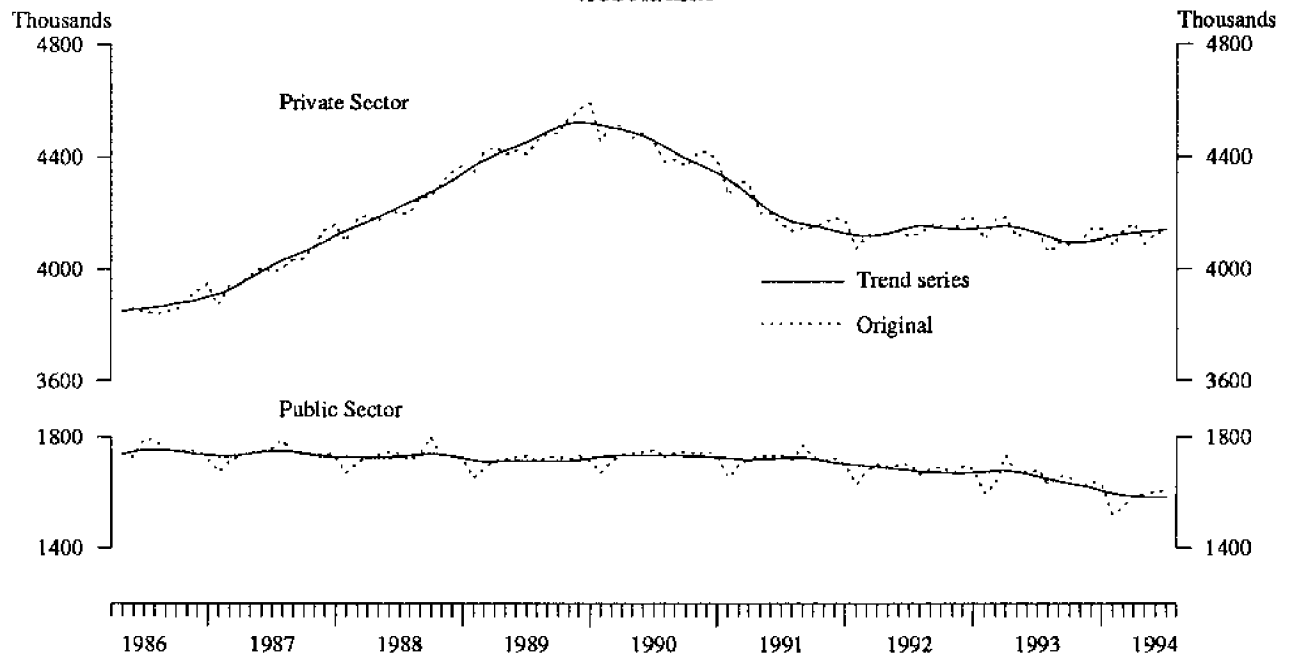
NOTE: The estimates presented in this publication are obtained from the Survey of Employment and Earnings (SEE), a survey of employers conducted quarterly. The ABS publishes a number of independently obtained series of employment estimates, including those from the monthly Labour Force Survey (LFS). The difference between estimates of wage and salary earners in SEE and LFS has increased substantially over the past fifteen months. For further information on the comparability of the two surveys, see paragraphs 22 to 27 of the Explanatory Notes.

Private and public sectors (Trend estimates)

In the private sector the number of employees grew steadily to a peak of 4,523,100 in November 1989 and then fell steadily to a trough of 4,115,400 in February 1992. Since February 1992 the number of employees has fluctuated over a small range to record a slight rise to 4,138,800 in June 1994.

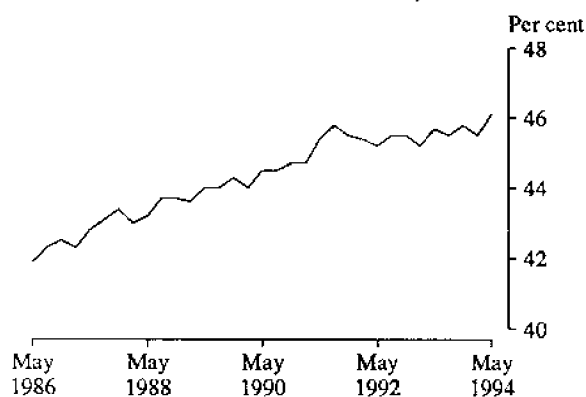
In the public sector the number of employees remained relatively steady over the five years to April 1990. It then fell steadily from 1,734,800 in April 1990 to 1,583,700 in June 1994.

DIAGRAM 1. EMPLOYED WAGE AND SALARY EARNERS, SECTORS AUSTRALIA



Source: See Tables 1 & 3

DIAGRAM 2. FEMALE WAGE AND SALARY EARNERS AS A PERCENTAGE OF TOTAL, AUSTRALIA



Source: See Table 7.

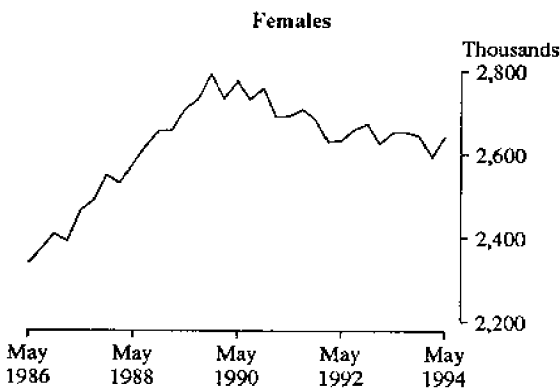
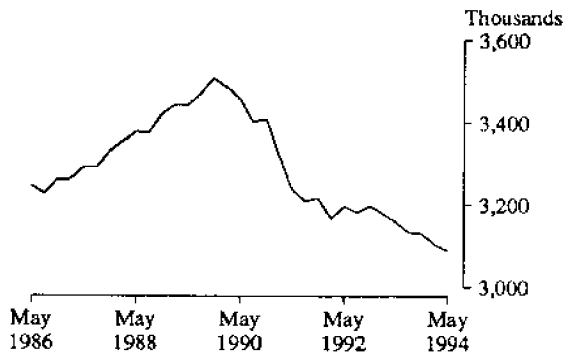
Male and female wage and salary earners (Original estimates)

Estimates of male and female wage and salary earners relate to the middle month of each quarter and are presented only in original terms rather than trend.

Diagram 2 shows the number of female wage and salary earners as a proportion of total wage and salary earners. Throughout the eight years from May 1986 to May 1994 this proportion has continued a steady rise from 41.9 per cent to 46.1 per cent.

Diagram 3 shows the number of male and female employees in Australia over the last eight years. The number of male employees rose from 3,246,600 in May 1986 to a peak of 3,508,600 in November 1989 and then fell to 3,088,200 in May 1994. The number of female employees also rose from May 1986 (2,338,400) to a peak in November 1989 (2,793,200) and then fell to 2,643,600 in May 1994. This represents a rise to November 1989 of 454,800 and a subsequent fall to May 1994 of 149,600.

DIAGRAM 3. EMPLOYED WAGE AND SALARY EARNERS AUSTRALIA
Males



Source: See Table 7.

Full-time and part-time wage and salary earners (Original estimates)

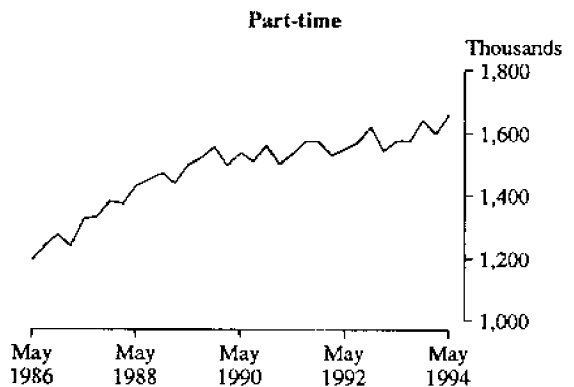
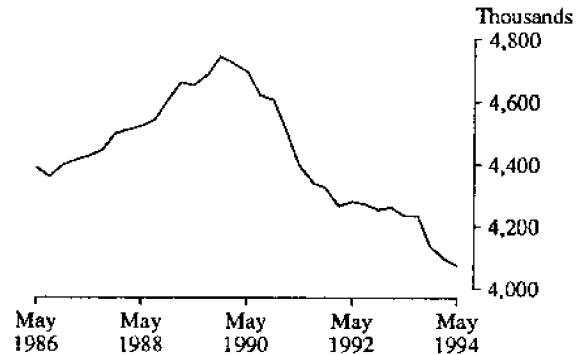
Estimates of full-time and part-time wage and salary earners also relate to the middle month of each quarter and are presented only in original terms.

Diagram 4 shows the number of full-time and part-time employees over the previous eight years.

The number of full-time employees grew steadily over a number of years to a peak of 4,745,600 in November 1989 and has since fallen to 4,071,900 in May 1994.

The number of part-time employees also grew steadily over a number of years to 1,556,200 in November 1989. In contrast to full-time employees, the number of part-time employees continued to rise after November 1989, at a slower rate, to 1,660,000 in May 1994.

DIAGRAM 4. EMPLOYED WAGE AND SALARY EARNERS PERSONS, AUSTRALIA
Full-time



Source: See Table 11.

Employer unit size (Original estimates)

Estimates presented in Table 23 show the concentration of employees in the private sector employer units in three size ranges.

Less than 20 employees:

As illustrated in Diagram 5, over the seven year period from May 1987 to May 1994 the number of employees in the private sector employed by organisations with less than 20 employees showed a rise from 1,312,800 to a temporary peak of 1,480,300 in August 1989. After a fall to a low of 1,378,600 in February 1991 the number of employees grew to 1,530,600 in November 1992 and has since fallen to 1,438,200 in May 1994. This represents a decrease of 6.0 per cent from the high of November 1992.

20 to 99 employees:

As illustrated in Diagram 5 the employment levels in the 20-99 range rose from 935,900 in May 1987 to a peak of 1,042,300 in November 1989 and has since fallen to 924,100 in May 1994.

100 plus employees:

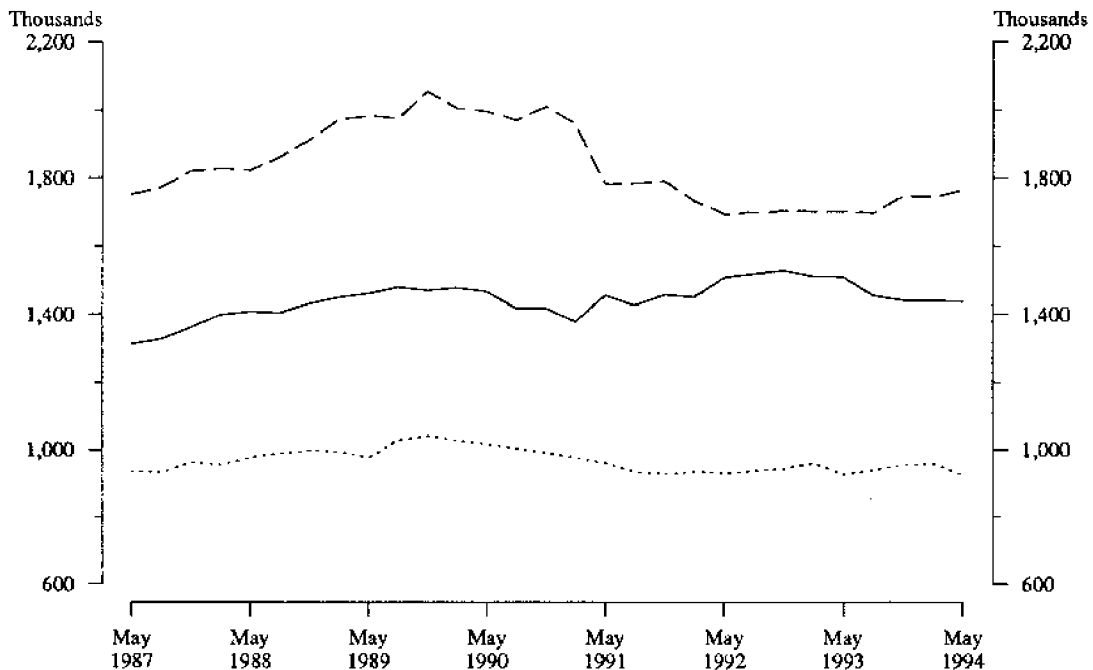
For the 100 plus employee category, Diagram 5 shows an increase to a peak of 2,056,400 in November 1989. The level of employment subsequently fell by 17.6 per cent to

1,694,900 in May 1992 and has since risen to 1,766,700 in May 1994.

Earnings (Original estimates)

Total earnings for employed wage and salary earners in the June quarter 1994 in original terms was estimated as \$42,798.3m. This was an increase of \$3,235.9m (8.2%) since the March quarter 1994 and an increase of \$1,647.0m (4.0%) since the same period in the previous year.

**DIAGRAM 5. EMPLOYED WAGE AND SALARY EARNERS, AUSTRALIA
PRIVATE SECTOR, EMPLOYER SIZE**



Source: See Table 23

———— 1-19 Employees
 20-99 Employees
 - - - 100+ Employees

TABLE 1. EMPLOYED WAGE AND SALARY EARNERS, STATES AND TERRITORIES, PERSONS—TREND
('000)

Month	NSW	Vic.	Qld	SA	WA	Tas.	NT	ACT	Aust.
PRIVATE									
1990-June	1,604.8	1,255.8	675.9	363.7	358.7	101.8	39.7	54.5	4,454.9
1991-June	1,483.2	1,152.4	632.9	365.1	358.2	97.6	41.7	54.6	4,185.5
1992-June	1,472.8	1,127.7	647.9	329.6	375.7	96.8	33.4	63.8	4,147.6
1993—									
May	1,431.5	1,115.2	662.6	326.6	402.5	104.3	36.1	59.8	4,138.6
June	1,428.7	1,104.6	660.7	328.2	403.7	105.0	35.3	59.6	4,125.8
July	1,428.9	1,091.9	659.2	330.1	403.2	104.9	34.4	59.5	4,112.1
August	1,432.2	1,078.9	659.3	331.9	401.0	104.2	33.6	59.6	4,100.7
September	1,437.3	1,067.8	661.9	333.2	397.7	103.0	33.0	59.8	4,093.8
October	1,442.9	1,059.6	667.7	334.3	394.8	101.5	32.7	60.1	4,093.6
November	1,448.0	1,055.1	675.3	335.1	393.2	99.7	32.9	60.1	4,099.3
December	1,452.8	1,054.6	683.0	335.3	392.3	97.7	33.4	59.6	4,108.6
1994—									
January	1,456.3	1,058.2	688.6	334.5	391.3	96.0	34.0	58.7	4,117.5
February	1,458.3	1,065.1	691.3	332.7	389.6	94.8	34.6	57.5	4,123.8
March	1,459.2	1,074.1	691.9	330.0	387.1	94.3	35.1	56.4	4,128.0
April	1,460.0	1,083.7	691.8	326.9	383.9	94.2	35.5	55.5	4,131.4
May	1,461.0	1,093.4	691.4	323.8	380.4	94.3	35.8	54.7	4,134.8
June	1,461.8	1,103.7	690.5	321.1	377.0	94.7	36.1	54.0	4,138.8
PUBLIC									
1990-June	557.8	453.7	262.8	152.0	162.0	51.1	22.4	71.3	1,733.4
1991-June	560.2	443.0	267.5	150.2	159.2	49.4	21.9	73.3	1,724.8
1992-June	535.7	430.0	269.5	145.3	159.2	48.3	20.5	71.0	1,679.5
1993—									
May	534.3	405.4	278.2	143.6	162.7	47.7	20.2	74.3	1,666.9
June	530.3	402.2	277.5	142.9	162.1	47.6	20.2	74.5	1,657.4
July	526.7	399.1	276.6	142.1	161.1	47.3	20.2	74.5	1,647.3
August	524.5	395.8	275.9	141.3	160.1	46.9	20.3	74.6	1,638.7
September	523.1	392.3	275.9	140.7	159.0	46.7	20.3	74.6	1,631.9
October	521.3	388.6	275.7	140.3	158.0	46.5	20.4	74.6	1,624.7
November	517.6	384.6	275.0	139.8	156.9	46.5	20.4	74.4	1,614.9
December	513.0	381.2	273.8	139.4	156.0	46.6	20.4	74.1	1,604.5
1994—									
January	508.5	378.8	272.4	138.9	155.3	46.9	20.5	73.8	1,595.3
February	505.5	377.4	271.1	138.4	154.7	47.1	20.5	73.6	1,588.8
March	504.3	376.5	270.3	137.9	154.2	47.4	20.6	73.5	1,585.3
April	504.4	375.8	270.1	137.3	153.5	47.6	20.6	73.6	1,583.7
May	505.2	375.1	270.2	136.7	152.9	47.8	20.7	73.8	1,583.1
June	506.7	374.6	270.4	136.2	152.4	47.9	20.7	74.0	1,583.7
PRIVATE AND PUBLIC									
1990-June	2,162.6	1,709.5	938.8	515.7	520.7	152.9	62.1	125.8	6,188.3
1991-June	2,043.4	1,595.3	900.4	515.3	517.4	147.0	63.6	127.9	5,910.4
1992-June	2,008.4	1,557.6	917.4	474.9	534.8	145.1	53.9	134.8	5,827.1
1993—									
May	1,965.8	1,520.7	940.8	470.2	565.2	152.0	56.3	134.1	5,805.5
June	1,958.9	1,506.8	938.2	471.1	565.8	152.5	55.5	134.0	5,783.2
July	1,955.6	1,490.9	935.8	472.2	564.3	152.2	54.6	134.0	5,759.4
August	1,956.7	1,474.7	935.2	473.2	561.1	151.2	53.8	134.2	5,739.4
September	1,960.4	1,460.1	937.8	473.9	556.8	149.7	53.3	134.4	5,725.6
October	1,964.2	1,448.1	943.3	474.5	552.9	148.0	53.1	134.7	5,718.3
November	1,965.7	1,439.7	950.3	474.9	550.1	146.2	53.3	134.5	5,714.2
December	1,965.8	1,435.8	956.8	474.6	548.3	144.3	53.8	133.7	5,713.1
1994—									
January	1,964.9	1,437.0	961.0	473.4	546.6	142.8	54.5	132.5	5,712.8
February	1,963.8	1,442.5	962.4	471.1	544.4	141.9	55.1	131.1	5,712.6
March	1,963.5	1,450.6	962.3	467.8	541.3	141.7	55.7	130.0	5,713.3
April	1,964.4	1,459.4	961.9	464.2	537.4	141.8	56.1	129.1	5,715.0
May	1,966.2	1,468.5	961.6	460.5	533.4	142.1	56.5	128.5	5,718.0
June	1,968.4	1,478.3	960.9	457.3	529.4	142.6	56.8	128.0	5,722.5

TABLE 2. EMPLOYED WAGE AND SALARY EARNERS, STATES AND TERRITORIES, PERSONS — SEASONALLY ADJUSTED ('000)

Month	NSW	Vic.	Qld	SA	WA	Tas.	NT	ACT	Aust.
PRIVATE									
1990-June	1,611.8	1,259.4	690.1	364.1	358.2	103.9	39.7	53.8	4,480.9
1991-June	1,484.4	1,155.7	632.5	362.5	358.9	95.8	42.3	55.1	4,187.3
1992-June	1,471.3	1,126.2	647.2	333.9	369.4	96.8	32.6	64.0	4,141.5
1993—									
May	1,427.3	1,118.0	664.6	325.1	405.0	105.6	36.3	60.2	4,142.1
June	1,428.8	1,123.2	665.0	327.5	406.6	106.8	35.9	59.8	4,153.6
July	1,434.8	1,072.4	656.3	331.6	401.9	102.7	34.0	58.8	4,092.6
August	1,434.9	1,078.6	658.2	334.8	400.9	103.4	33.2	58.8	4,102.9
September	1,432.0	1,070.6	654.6	331.1	402.5	103.7	33.0	60.4	4,087.9
October	1,440.2	1,059.6	669.7	333.5	389.2	101.3	32.4	59.3	4,085.3
November	1,448.8	1,055.2	675.0	337.8	391.4	100.7	32.8	60.8	4,102.4
December	1,455.6	1,049.2	683.0	329.0	390.5	100.1	33.2	61.5	4,102.1
1994									
January	1,464.5	1,060.0	690.4	338.5	390.9	92.4	34.4	57.4	4,128.5
February	1,448.8	1,063.4	700.7	335.7	394.9	93.7	34.6	57.3	4,129.0
March	1,468.9	1,068.3	692.6	333.3	395.2	94.5	34.9	57.5	4,145.1
April	1,449.4	1,088.2	685.3	321.8	374.1	94.0	36.1	53.4	4,102.3
May	1,464.2	1,097.1	688.5	321.1	378.1	95.3	35.9	54.9	4,135.2
June	1,463.6	1,103.8	692.4	322.7	379.0	95.7	35.4	55.2	4,147.7
PUBLIC									
1990-June	556.6	455.0	262.8	152.0	162.0	51.5	22.4	71.5	1,735.1
1991-June	555.9	442.0	263.5	150.5	158.9	47.8	21.9	72.3	1,714.0
1992-June	539.4	430.2	269.8	145.0	156.9	47.4	20.5	70.6	1,681.2
1993—									
May	532.6	403.5	278.4	143.3	161.4	47.8	20.2	74.6	1,662.6
June	530.8	399.6	278.7	142.8	161.5	48.5	19.9	74.6	1,657.7
July	517.3	399.6	274.1	141.5	160.7	46.7	20.4	73.9	1,633.4
August	529.6	398.8	275.5	141.2	162.0	46.6	20.4	74.6	1,647.4
September	527.6	394.1	275.9	141.1	159.6	47.1	20.2	74.6	1,638.8
October	511.9	386.7	275.2	140.0	157.0	46.2	20.5	74.5	1,611.1
November	523.3	383.5	275.9	139.8	155.1	46.1	20.2	74.9	1,619.4
December	525.0	382.5	278.5	139.8	157.4	46.7	20.4	74.6	1,625.1
1994									
January	501.9	376.6	269.5	138.9	155.3	47.5	20.6	73.4	1,584.0
February	495.9	376.9	268.9	137.8	155.0	46.7	20.6	73.1	1,574.5
March	503.6	376.6	268.9	138.1	153.4	47.3	20.5	73.2	1,582.5
April	504.3	376.4	272.0	137.7	154.4	47.8	20.6	73.6	1,587.4
May	512.1	376.0	269.4	137.0	152.7	48.0	20.7	74.2	1,590.7
June	508.0	374.3	272.5	135.3	151.9	47.9	20.7	74.4	1,586.2
PRIVATE AND PUBLIC									
1990-June	2,168.4	1,714.4	952.9	516.0	520.2	155.4	62.1	125.3	6,215.9
1991-June	2,040.3	1,597.7	896.0	513.0	517.8	143.6	64.1	127.4	5,901.3
1992-June	2,010.7	1,556.4	917.1	479.0	526.3	144.2	53.1	134.7	5,822.7
1993—									
May	1,959.9	1,521.5	942.9	468.4	566.4	153.4	56.6	134.8	5,804.7
June	1,959.7	1,522.8	943.7	470.2	568.1	155.3	55.9	134.4	5,811.2
July	1,952.1	1,472.0	930.4	473.1	562.6	149.4	54.4	132.7	5,726.0
August	1,964.5	1,477.4	933.7	476.0	562.9	150.0	53.6	133.3	5,750.3
September	1,959.5	1,464.7	930.5	472.1	562.1	150.8	53.2	135.1	5,726.7
October	1,952.1	1,446.3	944.9	473.5	546.2	147.6	52.9	133.9	5,696.4
November	1,972.1	1,438.7	950.8	477.6	546.5	146.8	53.0	135.6	5,721.8
December	1,980.7	1,431.7	961.5	468.7	547.9	146.8	53.6	136.1	5,727.2
1994—									
January	1,966.4	1,436.6	959.9	477.5	546.1	139.9	55.0	130.8	5,712.5
February	1,944.6	1,440.3	969.6	473.4	549.9	140.4	55.2	130.4	5,703.5
March	1,972.6	1,444.8	961.5	471.4	548.6	141.8	55.3	130.7	5,727.6
April	1,953.7	1,464.5	957.3	459.5	528.4	141.8	56.7	127.0	5,689.7
May	1,976.3	1,473.1	958.0	458.1	530.8	143.2	56.6	129.1	5,725.9
June	1,971.5	1,478.0	964.9	458.0	530.9	143.6	56.1	129.6	5,733.9

TABLE 3. EMPLOYED WAGE AND SALARY EARNERS, STATES AND TERRITORIES, PERSONS ('000)

Month	NSW	Vic.	Qld	SA	WA	Tas.	NT	ACT	Aust.
PRIVATE									
1990-June	1,599.6	1,246.9	685.8	363.1	358.6	102.9	40.2	53.1	4,450.3
1991-June	1,473.1	1,145.0	628.0	361.3	359.9	94.9	42.9	54.6	4,159.8
1992-June	1,459.7	1,116.5	642.8	332.4	371.0	96.0	33.2	63.7	4,115.3
1993—									
May	1,419.5	1,115.7	661.9	327.4	408.7	106.1	36.4	61.0	4,136.8
June	1,417.5	1,114.1	660.5	325.8	408.6	105.9	36.6	59.7	4,128.7
July	1,421.5	1,064.9	649.9	330.7	397.5	102.4	34.3	58.5	4,059.6
August	1,431.5	1,074.8	657.6	333.9	399.9	102.7	34.5	59.0	4,093.9
September	1,431.7	1,074.9	652.1	328.4	400.2	103.4	34.6	60.4	4,085.8
October	1,448.6	1,060.0	681.0	331.2	388.3	100.5	33.4	60.1	4,102.9
November	1,466.3	1,063.3	687.8	338.2	392.8	100.4	33.8	61.1	4,143.7
December	1,477.4	1,058.4	689.6	328.0	393.9	100.7	32.9	62.4	4,143.3
1994									
January	1,445.9	1,049.5	683.6	337.8	387.2	92.0	32.0	55.4	4,083.4
February	1,459.2	1,069.8	697.7	338.7	393.3	94.8	33.1	56.7	4,143.3
March	1,467.9	1,080.5	694.0	336.3	395.7	95.2	33.5	57.1	4,160.2
April	1,446.8	1,079.6	679.7	323.3	376.5	94.5	35.4	54.1	4,089.7
May	1,455.9	1,094.9	685.6	323.4	381.8	95.8	36.0	55.6	4,129.0
June	1,451.9	1,095.1	687.7	321.0	381.0	94.9	36.1	55.2	4,122.9
PUBLIC									
1990-June	565.5	458.0	265.6	153.7	165.3	52.0	22.8	72.5	1,755.2
1991-June	565.5	444.9	266.4	152.4	162.3	48.1	22.2	73.3	1,735.1
1992-June	549.1	433.1	273.0	147.1	160.3	47.7	20.8	71.6	1,702.7
1993—									
May	540.3	404.2	280.2	144.3	161.8	48.8	20.4	75.2	1,675.1
June	540.6	402.3	282.1	144.9	165.0	48.8	20.3	75.6	1,679.6
July	510.3	400.0	274.4	141.8	160.3	48.1	20.4	73.7	1,629.0
August	532.6	402.4	276.2	141.4	162.7	48.0	20.4	74.4	1,658.0
September	532.9	399.6	276.2	142.4	161.4	47.0	20.3	74.5	1,654.2
October	510.3	388.5	276.9	140.6	157.4	46.7	20.6	74.1	1,615.1
November	527.9	388.6	278.0	140.5	157.0	46.8	20.3	74.7	1,633.8
December	524.4	386.7	277.4	140.6	157.1	47.2	20.5	74.3	1,628.1
1994—									
January	478.1	364.8	259.6	132.7	148.6	44.4	20.2	72.7	1,521.0
February	489.4	370.0	266.3	136.1	152.9	44.1	20.2	72.9	1,551.8
March	510.1	373.4	271.5	138.3	154.1	47.2	20.4	73.5	1,588.5
April	508.6	375.0	273.1	138.5	155.0	47.9	20.6	74.1	1,592.8
May	519.6	376.7	271.1	137.9	153.0	48.9	20.9	74.8	1,602.8
June	517.4	376.8	275.9	137.4	155.2	48.2	21.1	75.3	1,607.3
PRIVATE AND PUBLIC									
1990-June	2,165.0	1,704.9	951.4	516.8	523.9	154.9	63.0	125.6	6,205.5
1991-June	2,038.6	1,589.9	894.5	513.7	522.1	143.0	65.1	127.9	5,894.9
1992-June	2,008.9	1,549.6	915.7	479.5	531.2	143.7	54.0	135.3	5,818.0
1993—									
May	1,959.8	1,519.9	942.1	471.7	570.5	154.9	56.8	136.2	5,811.9
June	1,958.2	1,516.4	942.5	470.7	573.7	154.7	56.9	135.3	5,808.2
July	1,931.9	1,464.9	924.3	472.5	557.8	150.4	54.7	132.2	5,688.6
August	1,964.1	1,477.2	933.8	475.3	562.6	150.6	54.9	133.4	5,751.9
September	1,964.6	1,474.5	928.3	470.8	561.6	150.5	54.9	134.9	5,740.0
October	1,958.8	1,448.5	957.8	471.8	545.6	147.2	54.0	134.2	5,718.0
November	1,994.2	1,451.8	965.7	478.7	549.8	147.2	54.1	135.9	5,777.5
December	2,001.7	1,445.1	967.1	468.7	551.0	147.9	53.4	136.6	5,771.4
1994—									
January	1,924.0	1,414.3	943.2	470.5	535.8	136.4	52.1	128.0	5,604.3
February	1,948.7	1,439.8	964.0	474.8	546.2	138.9	53.2	129.6	5,695.1
March	1,978.0	1,453.8	965.5	474.5	549.8	142.5	54.0	130.6	5,748.7
April	1,955.4	1,454.6	952.8	461.8	531.5	142.4	56.0	128.1	5,682.6
May	1,975.5	1,471.6	956.7	461.3	534.7	144.8	56.9	130.4	5,731.8
June	1,969.3	1,471.9	963.6	458.3	536.2	143.1	57.2	130.5	5,730.2

TABLE 4. GROSS EARNINGS, STATES AND TERRITORIES, SECTORS
(\$m)

Year/Quarter	NSW	Vic.	Qld	SA	WA	Tas.	NT	ACT	Aust.
PRIVATE									
1990-91	39,982.4	30,123.4	14,589.8	8,156.1	8,698.3	2,197.8	964.9	1,219.6	105,932.3
1991-92	39,513.3	28,614.4	15,025.2	7,873.7	9,160.4	2,289.1	879.5	1,377.8	104,733.6
1992-93	40,048.1	29,233.8	16,399.8	7,911.9	10,311.9	2,329.1	832.4	1,360.4	108,427.3
1993-94	40,901.1	29,074.9	16,379.2	8,319.9	10,851.0	2,261.3	829.9	1,290.8	109,908.2
1991—									
December	10,109.1	7,465.9	3,877.9	2,084.9	2,330.2	592.0	234.4	347.5	27,041.9
1992—									
March	9,549.5	6,927.8	3,616.5	1,812.4	2,221.5	561.7	188.4	347.6	25,225.4
June	10,022.5	7,235.6	3,863.6	1,940.2	2,415.2	566.6	194.1	376.4	26,614.1
September	9,979.2	7,314.0	4,012.5	1,932.4	2,514.3	577.0	210.3	367.5	26,907.1
December	10,331.7	7,562.3	4,264.7	2,066.0	2,577.2	590.0	212.3	337.8	27,941.9
1993—									
March	9,826.5	7,115.1	3,914.8	1,912.9	2,494.1	564.6	191.0	312.7	26,331.6
June	9,910.7	7,242.5	4,207.8	2,000.7	2,726.3	597.6	218.8	342.4	27,246.7
September	9,946.2	7,195.0	3,960.4	2,094.3	2,764.8	578.4	214.3	330.7	27,084.3
December	10,498.9	7,253.0	4,198.3	2,167.2	2,753.4	597.8	203.0	352.2	28,023.9
1994—									
March	9,921.8	6,981.6	3,953.7	2,043.0	2,615.6	528.0	194.8	295.1	26,533.7
June	10,534.1	7,645.3	4,266.8	2,015.4	2,717.1	557.0	217.8	312.7	28,266.3
PUBLIC									
1990-91	16,633.1	13,386.1	7,185.0	4,486.4	4,607.5	1,399.6	683.2	2,460.6	50,841.4
1991-92	17,313.9	13,971.1	7,822.1	4,599.1	4,942.1	1,474.5	668.4	2,611.3	53,402.5
1992-93	17,613.4	14,322.4	8,453.9	4,592.5	4,994.2	1,454.0	709.2	2,621.9	54,761.5
1993-94	18,116.7	13,445.9	8,750.7	4,854.4	5,259.2	1,477.7	760.9	2,992.9	55,658.5
1991—									
December	4,372.6	3,752.6	2,048.8	1,179.5	1,277.0	374.9	168.5	654.4	13,828.3
1992—									
March	4,337.9	3,448.2	1,933.8	1,155.9	1,229.8	366.2	172.2	669.2	13,313.4
June	4,281.2	3,420.6	1,952.7	1,123.3	1,194.8	349.3	154.0	583.8	13,059.7
September	4,372.3	3,465.4	2,006.1	1,196.7	1,278.4	376.6	177.8	670.4	13,543.6
December	4,577.6	3,766.0	2,290.4	1,144.9	1,319.5	372.3	180.5	684.6	14,335.8
1993—									
March	4,127.9	3,466.2	1,999.9	1,107.9	1,169.9	332.6	158.4	614.8	12,977.6
June	4,535.6	3,624.9	2,157.5	1,143.1	1,226.4	372.4	192.6	652.1	13,904.6
September	4,471.5	3,407.1	2,119.0	1,236.4	1,323.0	360.1	186.0	761.0	13,864.1
December	4,590.1	3,394.5	2,309.6	1,213.3	1,367.1	376.1	200.9	782.1	14,233.6
1994—									
March	4,301.4	3,160.6	2,030.2	1,134.4	1,233.4	341.0	168.6	659.2	13,028.7
June	4,753.8	3,483.8	2,291.9	1,270.3	1,335.7	400.5	205.4	790.6	14,532.0
PRIVATE AND PUBLIC									
1990-91	56,615.5	43,509.4	21,774.8	12,642.5	13,305.9	3,597.4	1,648.1	3,680.2	156,773.7
1991-92	56,827.3	42,585.5	22,847.3	12,472.8	14,102.5	3,763.7	1,547.9	3,989.1	158,136.1
1992-93	57,661.4	43,556.2	24,853.7	12,504.5	15,306.1	3,783.0	1,541.6	3,982.2	163,188.8
1993-94	59,017.8	42,520.9	25,129.9	13,174.3	16,110.2	3,739.0	1,590.8	4,283.8	165,566.7
1991—									
December	14,481.6	11,218.5	5,926.7	3,264.4	3,607.2	966.9	402.9	1,001.9	40,870.1
1992—									
March	13,887.5	10,376.0	5,550.3	2,968.3	3,451.4	927.9	360.6	1,016.9	38,538.8
June	14,303.7	10,656.2	5,816.3	3,063.5	3,609.9	915.9	348.1	960.3	39,673.8
September	14,351.5	10,779.3	6,018.6	3,129.1	3,792.6	953.6	388.1	1,037.8	40,450.7
December	14,909.2	11,328.2	6,555.1	3,210.9	3,896.7	962.3	392.8	1,022.4	42,277.7
1993—									
March	13,954.4	10,581.3	5,914.7	3,020.7	3,664.0	897.2	349.3	927.5	39,309.1
June	14,446.3	10,867.4	6,365.3	3,143.7	3,952.7	970.0	411.3	994.5	41,151.3
September	14,417.7	10,602.1	6,079.4	3,330.7	4,087.9	938.5	400.3	1,091.8	40,948.5
December	15,089.0	10,647.5	6,507.9	3,380.5	4,120.5	973.9	403.9	1,134.3	42,257.5
1994—									
March	14,223.2	10,142.2	5,983.9	3,177.4	3,849.0	869.0	363.4	954.4	39,562.4
June	15,287.9	11,129.1	6,558.7	3,285.7	4,052.9	957.5	423.2	1,103.3	42,798.3

TABLE 5. EMPLOYED WAGE AND SALARY EARNERS, STATES AND TERRITORIES, PERSONS — TREND

State, Territory/Sector	Number of employees (<i>'000</i>)				
	June 1993	March 1994	April 1994	May 1994	June 1994
New South Wales	1,958.9	1,963.5	1,964.4	1,966.2	1,968.4
Private	1,428.7	1,459.2	1,460.0	1,461.0	1,461.8
Public	530.3	504.3	504.4	505.2	506.7
Commonwealth	123.5	114.6	114.4	114.3	114.3
State	352.8	336.6	336.8	337.7	339.2
Local	54.0	53.1	53.2	53.2	53.2
Victoria	1,506.8	1,450.6	1,459.4	1,468.5	1,478.3
Private	1,104.6	1,074.1	1,083.7	1,093.4	1,103.7
Public	402.2	376.5	375.8	375.1	374.6
Commonwealth	93.7	86.8	86.5	86.4	86.4
State	262.3	244.8	244.4	244.0	243.6
Local	46.2	45.0	44.9	44.8	44.6
Queensland	938.2	962.3	961.9	961.6	960.9
Private	660.7	691.9	691.8	691.4	690.5
Public	277.5	270.3	270.1	270.2	270.4
Commonwealth	47.2	44.8	44.6	44.5	44.4
State	195.5	192.2	192.1	192.3	192.7
Local	34.8	33.3	33.3	33.4	33.4
South Australia	471.1	467.8	464.2	460.5	457.3
Private	328.2	330.0	326.9	323.8	321.1
Public	142.9	137.9	137.3	136.7	136.2
Commonwealth	26.8	25.0	24.9	24.8	24.7
State	106.8	103.8	103.4	102.9	102.5
Local	9.3	9.1	9.0	9.0	8.9
Western Australia	565.8	541.3	537.4	533.4	529.4
Private	403.7	387.1	383.9	380.4	377.0
Public	162.1	154.2	153.5	152.9	152.4
Commonwealth	24.2	22.2	22.1	22.0	21.9
State	125.4	118.7	118.1	117.6	117.0
Local	12.4	13.2	13.3	13.4	13.5
Tasmania	152.5	141.7	141.8	142.1	142.6
Private	105.0	94.3	94.2	94.3	94.7
Public	47.6	47.4	47.6	47.8	47.9
State	35.0	36.0	36.2	36.4	36.5
Northern Territory	55.5	55.7	56.1	56.5	56.8
Private	35.3	35.1	35.5	35.8	36.1
Public	20.2	20.6	20.6	20.7	20.7
Australian Capital Territory	134.0	130.0	129.1	128.5	128.0
Private	59.6	56.4	55.5	54.7	54.0
Public	74.5	73.5	73.6	73.8	74.0
Australia	5,783.2	5,713.3	5,715.0	5,718.0	5,722.5
Private	4,125.8	4,128.0	4,131.4	4,134.8	4,138.8
Public	1,657.4	1,585.3	1,583.7	1,583.1	1,583.7
Commonwealth	381.8	359.3	358.4	357.8	357.4
State	1,113.3	1,067.2	1,066.4	1,066.6	1,067.5
Local	162.3	158.8	158.8	158.8	158.7

TABLE 6. EMPLOYED WAGE AND SALARY EARNERS, STATES AND TERRITORIES, PERSONS — SEASONALLY ADJUSTED

State, Territory/Sector	Number of employees (<i>'000</i>)				
	June 1993	March 1994	April 1994	May 1994	June 1994
New South Wales	1,959.7	1,972.6	1,953.7	1,976.3	1,971.5
Private	1,428.8	1,468.9	1,449.4	1,464.2	1,463.6
Public	530.8	503.6	504.3	512.1	508.0
Commonwealth	122.7	114.3	114.9	114.5	114.3
State	354.0	336.0	336.3	344.4	340.7
Local	54.1	53.3	53.1	53.3	53.0
Victoria	1,522.8	1,444.8	1,464.5	1,473.1	1,478.0
Private	1,123.2	1,068.3	1,088.2	1,097.1	1,103.8
Public	399.6	376.6	376.4	376.0	374.3
Commonwealth	92.7	86.0	87.1	87.1	86.5
State	260.9	245.4	243.9	244.6	243.0
Local	46.1	45.1	45.4	44.3	44.8
Queensland	943.7	*961.5	957.3	958.0	964.9
Private	665.0	692.6	685.3	688.5	692.4
Public	278.7	*268.9	272.0	269.4	272.5
Commonwealth	46.2	*44.9	44.9	44.3	44.3
State	197.2	190.6	193.7	191.7	194.9
Local	35.2	33.5	33.4	33.4	33.3
South Australia	470.2	471.4	459.5	458.1	458.0
Private	327.5	333.3	321.8	321.1	322.7
Public	142.8	138.1	137.7	137.0	135.3
Commonwealth	26.6	25.1	25.1	24.8	24.5
State	106.8	103.9	103.7	103.2	101.9
Local	9.3	9.1	9.0	9.0	8.9
Western Australia	568.1	548.6	528.4	530.8	530.9
Private	406.6	395.2	374.1	378.1	379.0
Public	161.5	153.4	154.4	152.7	151.9
Commonwealth	23.9	21.9	22.0	22.1	22.1
State	125.3	118.3	119.1	117.3	116.3
Local	12.3	13.2	13.3	13.3	13.6
Tasmania	155.3	141.8	141.8	143.2	143.6
Private	106.8	94.5	94.0	95.3	95.7
Public	48.5	47.3	47.8	48.0	47.9
State	35.9	36.1	36.3	36.3	36.6
Northern Territory	55.9	55.3	56.7	56.6	56.1
Private	35.9	34.9	36.1	35.9	35.4
Public	19.9	20.5	20.6	20.7	20.7
Australian Capital Territory	134.4	130.7	127.0	129.1	129.6
Private	59.8	57.5	53.4	54.9	55.2
Public	74.6	73.2	73.6	74.2	74.4
Australia	5,811.2	5,727.6	5,689.7	5,725.9	5,733.9
Private	4,153.6	4,145.1	4,102.3	4,135.2	4,147.7
Public	1,657.7	1,582.5	1,587.4	1,590.7	1,586.2
Commonwealth	379.5	358.0	359.5	358.6	357.9
State	1,115.6	1,065.0	1,068.6	1,073.7	1,069.8
Local	162.6	159.5	159.3	158.4	158.5

TABLE 7. EMPLOYED WAGE AND SALARY EARNERS, STATES AND TERRITORIES

State, Territory/Sector	Number of employees (*000)						Gross earnings	
	June 1993	March 1994	April 1994	May 1994		June 1994	June Quarter 1994	
	Persons	Persons	Persons	Males	Females	Persons	Persons	\$m
New South Wales	1,958.2	1,978.0	1,955.4	1,075.6	899.9	1,975.5	1,969.3	15,287.9
Private	1,417.5	1,467.9	1,446.8	782.9	673.0	1,455.9	1,451.9	10,534.1
Public	540.6	510.1	508.6	292.6	227.0	519.6	517.4	4,753.8
Commonwealth	123.2	115.2	115.1	69.0	46.1	115.1	114.8	1,245.4
State	363.3	341.4	340.8	184.9	166.4	351.3	349.7	3,094.4
Local	54.1	53.5	52.8	38.7	14.5	53.1	53.0	413.9
Victoria	1,516.4	1,453.8	1,454.6	781.8	689.7	1,471.6	1,471.9	11,129.1
Private	1,114.1	1,080.5	1,079.6	595.2	499.7	1,094.9	1,095.1	7,645.3
Public	402.3	373.4	375.0	186.6	190.1	376.7	376.8	3,483.8
Commonwealth	92.9	86.8	87.2	50.9	36.2	87.2	86.7	913.9
State	262.8	240.8	242.6	113.9	130.8	244.7	244.8	2,305.6
Local	46.7	45.8	45.1	21.8	23.0	44.8	45.4	264.3
Queensland	942.5	965.5	952.8	530.2	426.5	956.7	963.6	6,558.7
Private	660.5	694.0	679.7	375.9	309.7	685.6	687.7	4,266.8
Public	282.1	271.5	273.1	154.3	116.8	271.1	275.9	2,291.9
Commonwealth	46.8	*44.9	45.1	25.7	19.0	44.7	44.8	432.2
State	199.8	192.9	194.6	102.0	90.7	192.7	197.5	1,631.9
Local	35.5	33.7	33.4	26.5	7.2	33.7	33.5	227.8
South Australia	470.7	474.5	461.8	242.6	218.7	461.3	458.3	3,285.7
Private	325.8	336.3	323.3	173.2	150.2	323.4	321.0	2,015.4
Public	144.9	138.3	138.5	69.5	68.4	137.9	137.4	1,270.3
Commonwealth	27.0	25.4	25.1	15.7	9.2	24.9	24.8	249.1
State	108.5	103.8	104.3	47.6	56.3	103.9	103.6	956.1
Local	9.4	9.1	9.1	6.2	2.9	9.1	9.0	65.2
Western Australia	573.7	549.8	531.5	284.0	250.7	534.7	536.2	4,052.9
Private	408.6	395.7	376.5	205.7	176.0	381.8	381.0	2,717.1
Public	165.0	154.1	155.0	78.3	74.7	153.0	155.2	1,335.7
Commonwealth	23.8	22.0	22.1	13.7	8.4	22.1	22.0	221.3
State	128.9	118.8	119.6	56.4	61.2	117.6	119.7	1,036.6
Local	12.2	13.3	13.3	8.2	5.1	13.3	13.5	77.9
Tasmania	154.7	142.5	142.4	78.7	66.1	144.8	143.1	957.5
Private	105.9	95.2	94.5	53.8	42.0	95.8	94.9	557.0
Public	48.8	47.2	47.9	24.8	24.1	48.9	48.2	400.5
Commonwealth	8.2	7.6	7.6	4.9	2.8	7.6	7.6	74.6
State	36.0	35.9	36.4	17.1	20.3	37.4	36.7	299.8
Local	4.5	3.8	3.9	2.9	1.1	3.9	3.9	26.1
Northern Territory	56.9	54.0	56.0	29.1	27.7	56.9	57.2	423.2
Private	36.6	33.5	35.4	19.8	16.2	36.0	36.1	217.8
Public	20.3	20.4	20.6	9.4	11.5	20.9	21.1	205.4
Commonwealth	3.8	3.7	3.7	2.1	1.7	3.8	3.8	38.4
State	15.4	15.6	15.7	6.5	9.4	15.8	15.9	159.4
Local	1.1	1.2	1.2	0.8	0.4	1.2	1.4	7.6
Australian Capital Territory	135.3	130.6	128.1	66.2	64.2	130.4	130.5	1,103.3
Private	59.7	57.1	54.1	25.8	29.8	55.6	55.2	312.7
Public	75.6	73.5	74.1	40.4	34.4	74.8	75.3	790.6
Commonwealth	55.4	54.4	54.1	30.5	23.9	54.4	54.9	597.8
State	20.1	19.1	19.9	9.9	10.6	20.4	20.5	192.9
Australia	5,808.2	5,748.7	5,682.6	3,088.2	2,643.6	5,731.8	5,730.2	42,798.3
Private	4,128.7	4,160.2	4,089.7	2,232.4	1,896.6	4,129.0	4,122.9	28,266.3
Public	1,679.6	1,588.5	1,592.8	855.8	747.0	1,602.8	1,607.3	14,532.0
Commonwealth	381.1	359.9	360.0	212.6	147.2	359.8	359.4	3,772.6
State	1,134.8	1,068.2	1,074.0	538.3	545.6	1,083.9	1,088.3	9,676.6
Local	163.6	160.4	158.9	104.9	54.2	159.1	159.6	1,082.8

TABLE 8. EMPLOYED WAGE AND SALARY EARNERS, STATES AND TERRITORIES, PUBLIC INSTITUTIONAL SECTOR

State, Territory/Sector	Public Trading Enterprises		Financial Enterprises		General Government		Total Public	
	May 1994	June Quarter 1994	May 1994	June Quarter 1994	May 1994	June Quarter 1994	May 1994	June Quarter 1994
	Persons ('000)	Gross Earnings (\$m)	Persons ('000)	Gross Earnings (\$m)	Persons ('000)	Gross Earnings (\$m)	Persons ('000)	Gross Earnings (\$m)
New South Wales								
Total Public	109.5	1,252.0	24.2	208.1	385.9	3,293.7	519.6	4,753.8
Commonwealth	53.6	664.2	18.1	157.7	43.4	423.5	115.1	1,245.4
State	48.8	527.7	6.1	50.4	296.5	2,516.3	351.3	3,094.4
Local	7.1	60.0	—	—	46.0	353.9	53.1	413.9
Victoria								
Total Public	78.1	967.5	18.3	159.5	280.3	2,356.8	376.7	3,483.8
Commonwealth	40.1	480.4	14.5	118.9	32.5	314.5	87.2	913.9
State	37.0	476.6	3.8	40.5	203.9	1,788.4	244.7	2,305.6
Local	1.0	10.5	—	—	43.8	253.9	44.8	264.3
Queensland								
Total Public	36.0	339.8	8.0	64.6	227.1	1,887.5	271.1	2,291.9
Commonwealth	18.9	197.5	5.7	46.5	20.1	188.2	44.7	432.2
State	11.7	102.8	2.3	18.1	178.7	1,511.0	192.7	1,631.9
Local	5.4	39.4	—	—	28.3	188.4	33.7	227.8
South Australia								
Total Public	22.7	230.6	6.8	65.6	108.4	974.2	137.9	1,270.3
Commonwealth	11.4	118.6	2.4	21.3	11.1	109.2	24.9	249.1
State	11.2	111.6	4.4	44.3	88.3	800.3	103.9	956.1
Local	0.1	0.4	—	—	9.0	64.7	9.1	65.2
Western Australia								
Total Public	26.0	265.3	6.3	53.5	120.6	1,017.0	153.0	1,335.7
Commonwealth	9.1	95.4	2.8	28.7	10.1	97.2	22.1	221.3
State	16.9	169.9	3.5	24.8	97.2	841.9	117.6	1,036.6
Local	—	—	—	—	13.3	77.9	13.3	77.9
Tasmania								
Total Public	6.1	67.3	0.7	5.0	42.2	328.1	48.9	400.5
Commonwealth	2.8	31.0	0.6	4.8	4.2	38.9	7.6	74.6
State	2.9	33.0	—	0.2	34.5	266.5	37.4	299.8
Local	0.4	3.4	—	—	3.5	22.7	3.9	26.1
Northern Territory								
Total Public	1.1	10.7	0.2	1.9	19.6	192.9	20.9	205.4
Commonwealth	0.9	9.5	0.2	1.5	2.8	27.5	3.8	38.4
State	0.2	1.2	—	0.4	15.6	157.8	15.8	159.4
Local	—	—	—	—	1.2	7.6	1.2	7.6
Australian Capital Territory								
Total Public	5.8	60.4	1.3	13.1	67.8	717.1	74.8	790.6
Commonwealth	3.1	30.6	1.2	12.5	50.1	554.6	54.4	597.8
State	2.7	29.7	0.1	0.7	17.7	162.5	20.4	192.9
Australia								
Total Public	285.2	3,193.6	65.8	571.2	1,251.8	10,767.2	1,602.8	14,532.0
Commonwealth	139.9	1,627.3	45.5	391.8	174.3	1,753.5	359.8	3,772.6
State	131.2	1,452.6	20.3	179.5	932.4	8,044.6	1,083.9	9,676.6
Local	14.0	113.7	—	—	145.1	969.1	159.1	1,082.8

TABLE 9. EMPLOYED WAGE AND SALARY EARNERS, AUSTRALIA,
PUBLIC INSTITUTIONAL SECTOR, MAY 1994
PERSONS ('000)

<i>Industry</i>	<i>Public Trading Enterprises</i>	<i>Financial Enterprises</i>	<i>General Government</i>	<i>Total Public</i>
Agriculture, forestry, fishing and hunting	0.4	—	4.6	5.0
Mining	1.7	—	—	1.7
Manufacturing	10.1	0.3	4.3	14.7
Electricity, gas and water	71.3	—	9.4	80.6
Construction	0.2	3.8	29.7	33.7
Wholesale trade	1.1	—	0.6	1.6
Retail trade	0.1	—	0.1	0.2
Transport and storage	80.2	—	21.0	101.3
Communication	102.9	—	0.2	103.1
Finance, property and business services	6.1	60.9	14.0	81.0
Public administration and defence(a)	1.1	0.9	326.6	328.5
Community services	1.7	—	826.8	828.5
Recreation, personal and other services	8.3	—	14.5	22.8
Total all industries	285.2	65.8	1,251.8	1,602.8

(a) Excludes members of permanent defence forces and employees of overseas embassies, consulates etc.

TABLE 10. EMPLOYED WAGE AND SALARY EARNERS, AUSTRALIA,
PUBLIC INSTITUTIONAL SECTOR, JUNE QUARTER 1994
GROSS EARNINGS (\$m)

<i>Industry</i>	<i>Public Trading Enterprises</i>	<i>Financial Enterprises</i>	<i>General Government</i>	<i>Total Public</i>
Agriculture, forestry, fishing and hunting	2.7	—	41.3	44.0
Mining	30.8	—	—	30.8
Manufacturing	107.1	2.3	41.9	151.3
Electricity, gas and water	767.8	—	91.7	859.5
Construction	2.5	40.5	321.5	364.5
Wholesale trade	10.1	—	4.2	14.3
Retail trade	0.6	—	0.5	1.0
Transport and storage	1,013.6	—	229.3	1,242.9
Communication	1,119.0	—	1.1	1,120.1
Finance, property and business services	69.2	518.5	135.0	722.6
Public administration and defence(a)	8.4	9.9	2,682.7	2,701.1
Community services	16.1	—	7,078.6	7,094.8
Recreation, personal and other services	45.6	—	139.4	185.1
Total all industries	3,193.6	571.2	10,767.2	14,532.0

(a) Excludes members of permanent defence forces and employees of overseas embassies, consulates etc.

TABLE 11. EMPLOYED WAGE AND SALARY EARNERS—FULL-TIME AND PART-TIME(a)—MAY 1994

	Number of employees (<i>'000</i>)					
	Full-time			Part-time		
	Males	Females	Persons	Males	Females	Persons
AUSTRALIA BY INDUSTRY						
Mining	53.2	4.7	57.9	0.7	0.4	1.2
Manufacturing	584.7	177.9	762.7	37.1	58.4	95.5
Electricity, gas and water	71.5	9.1	80.7	0.8	1.8	2.6
Construction	187.5	28.7	216.3	14.8	11.4	26.2
Wholesale trade	247.3	91.4	338.7	26.5	43.2	69.7
Retail trade	235.5	158.0	393.5	123.1	266.6	389.7
Transport and storage	178.4	51.6	230.1	24.2	12.3	36.6
Communication	71.8	24.5	96.2	1.6	7.2	8.7
Finance, property and business services	299.9	257.6	557.4	42.7	132.6	175.3
Public administration and defence(b)	182.4	96.9	279.3	11.5	37.7	49.2
Community services	394.5	475.5	870.0	101.8	450.3	552.2
Recreation, personal and other services(c)	103.2	81.4	184.5	89.5	163.3	252.8
Total all industries(d)	2,613.8	1,458.1	4,071.9	474.4	1,185.5	1,660.0
Private	1,836.3	960.4	2,796.8	396.1	936.2	1,332.2
Public	777.5	497.7	1,275.1	78.4	249.4	327.7
STATES AND TERRITORIES						
New South Wales	907.5	526.8	1,434.3	168.1	373.1	541.2
Victoria	666.4	370.3	1,036.7	115.4	319.4	434.8
Queensland	451.0	234.1	685.1	79.2	192.4	271.7
South Australia	201.8	105.1	306.9	40.9	113.5	154.4
Western Australia	241.1	133.3	374.4	42.9	117.4	160.3
Tasmania	66.3	31.0	97.4	12.3	35.1	47.4
Northern Territory	23.5	18.3	41.8	5.7	9.4	15.1
Australian Capital Territory	56.3	39.1	95.4	9.9	25.1	35.1

(a) See Explanatory Notes, paragraph 26. (b) Excludes members of permanent defence forces and employees of overseas embassies, consulates etc. (c) Excludes private households employing staff. (d) Includes employees of government agencies classified to Agriculture, forestry, fishing and hunting.

TABLE 12. EMPLOYED WAGE AND SALARY EARNERS, AUSTRALIA, PERSONS — TREND

Industry	Number of employees (^{'000})				
	June 1993	March 1994	April 1994	May 1994	June 1994
Mining	68.5	61.9	61.0	60.0	58.9
Manufacturing	890.7	865.1	859.1	853.4	847.8
Construction	257.7	238.5	238.0	238.2	238.9
Wholesale trade	407.3	408.1	410.2	412.1	414.0
Retail trade	773.9	786.0	785.7	785.6	785.1
Transport and storage	259.6	265.1	265.3	265.9	266.8
Communication	108.2	104.8	104.6	104.4	104.3
Finance, property and business services	754.8	726.8	728.1	729.5	731.3
Public administration and defence(a)	337.5	327.7	327.7	327.6	327.3
Community services	1,373.9	1,395.5	1,399.7	1,403.3	1,406.3
Recreation, personal and other services	448.0	440.6	440.0	439.8	439.9
Total all industries(b)(c)	5,783.2	5,713.3	5,715.0	5,718.0	5,722.5

(a) Excludes members of permanent defence forces and employees of overseas embassies, consulates, etc. (b) Includes employees of government agencies classified to Agriculture, forestry, fishing and hunting. (c) Derived indirectly by the addition of trend data for the private and public sectors, not by the summation of the component industries because not all industries are trend adjusted.

TABLE 13. EMPLOYED WAGE AND SALARY EARNERS, AUSTRALIA, PERSONS — SEASONALLY ADJUSTED

Industry	Number of employees (^{'000})				
	June 1993	March 1994	April 1994	May 1994	June 1994
Mining	69.5	63.7	59.1	58.8	59.0
Manufacturing	893.5	868.7	855.0	852.4	851.6
Construction	259.4	240.0	238.0	239.0	242.8
Wholesale trade	412.7	409.6	409.9	411.6	412.6
Retail trade	789.7	788.6	777.7	786.6	786.8
Transport and storage	251.2	263.1	265.4	267.1	269.3
Communication	108.4	104.9	104.6	104.5	104.5
Finance, property and business services	756.7	720.6	732.9	729.0	732.3
Public administration and defence(a)	332.4	328.4	327.4	326.9	327.3
Community services	1,388.0	1,403.9	1,387.6	1,403.2	1,408.5
Recreation, personal and other services	439.5	441.0	436.0	444.3	440.8
Total all industries(b)(c)	5,811.2	5,727.6	5,689.7	5,725.9	5,733.9

(a) Excludes members of permanent defence forces and employees of overseas embassies, consulates, etc. (b) Includes employees of government agencies classified to Agriculture, forestry, fishing and hunting. (c) Derived indirectly by the addition of seasonally adjusted private and public sector estimates, not by the summation of the component industries because not all industries are seasonally adjusted.

TABLE 14. EMPLOYED WAGE AND SALARY EARNERS, AUSTRALIA — SECTOR AND INDUSTRY

Industry	Number of employees (<i>'000</i>)						Gross earnings	
	June 1993	March 1994	April 1994	May 1994		June 1994	June Quarter 1994	
	Persons	Persons	Persons	Males	Females	Persons	Persons	\$m
PRIVATE								
Mining	65.4	59.4	57.5	52.3	5.1	57.4	57.5	830.8
Manufacturing	872.5	856.9	843.5	609.2	234.2	843.5	838.4	6,851.7
Electricity, gas and water	2.9	2.7	2.6	2.0	0.6	2.6	2.6	26.1
Construction	219.4	206.8	205.7	175.1	33.7	208.7	211.3	1,643.4
Wholesale trade	405.6	405.6	403.4	272.8	133.9	406.7	406.0	3,131.0
Retail trade	780.7	789.2	773.5	358.5	424.5	783.0	777.6	3,556.4
Transport and storage	145.3	162.4	163.3	119.0	46.3	165.4	166.7	1,413.8
Finance, property and business services	659.1	640.3	651.7	307.9	343.8	651.7	654.5	5,474.9
Community services	565.1	611.8	578.5	152.9	440.7	593.6	594.2	3,460.3
Recreation, personal and other services(a)	411.7	423.3	408.2	181.6	232.9	414.5	412.2	1,862.8
Total all industries(b)	4,128.7	4,160.2	4,089.7	2,232.4	1,896.6	4,129.0	4,122.9	28,266.3
COMMONWEALTH GOVERNMENT								
Manufacturing	14.8	9.2	9.3	7.6	1.5	9.1	9.0	99.6
Electricity, gas and water	0.7	0.7	0.7	0.6	0.1	0.7	0.7	6.6
Construction	4.5	*4.5	*4.6	*4.0	*0.5	*4.5	*4.5	*48.5
Wholesale trade	0.6	0.6	0.6	0.4	0.2	0.6	0.6	6.8
Retail trade	—	—	—	—	—	—	—	—
Transport and storage	27.8	*28.9	29.4	21.7	7.7	29.4	29.4	438.1
Communication	107.5	103.2	102.8	72.2	30.8	102.9	102.7	1,119.0
Finance, property and business services	54.9	50.9	50.4	20.2	29.8	50.0	49.6	447.2
Public administration and defence(c)	107.6	105.1	104.2	54.7	49.6	104.3	104.0	1,012.1
Community services	54.8	48.9	49.7	26.8	23.3	50.1	50.6	495.5
Recreation, personal and other services(a)	8.0	8.1	8.2	4.5	3.7	8.2	8.2	99.2
Total all industries(d)	381.1	359.9	360.0	212.6	147.2	359.8	359.4	3,772.6

See footnotes at end of table.

TABLE 14. EMPLOYED WAGE AND SALARY EARNERS, AUSTRALIA — SECTOR AND INDUSTRY—continued

Industry	Number of employees ('000)						Gross earnings	
	June 1993	March 1994	April 1994	May 1994		June 1994	June Quarter 1994	
	Persons	Persons	Persons	Males	Females	Persons	Persons	\$m
STATE GOVERNMENT								
Agriculture, forestry, fishing and hunting	4.6	5.0	5.0	3.9	1.1	4.9	4.9	43.4
Mining	4.2	3.8	1.7	1.6	0.1	1.7	1.5	30.8
Manufacturing	6.4	4.8	4.8	4.3	0.5	4.8	4.8	46.2
Electricity, gas and water	74.8	66.3	66.5	56.6	8.7	65.3	63.8	725.2
Construction	30.2	27.7	27.9	22.2	5.6	27.8	27.1	306.3
Wholesale trade	1.2	0.6	0.6	0.4	0.3	0.7	0.7	5.0
Retail trade	0.2	0.2	0.2	0.1	0.1	0.2	0.2	1.0
Transport and storage	75.0	70.7	70.7	60.5	9.8	70.2	70.0	792.8
Finance, property and business services	45.3	34.7	30.8	14.4	16.5	30.9	30.8	274.3
Public administration and defence(c)	90.9	86.9	85.6	51.9	34.0	85.8	86.1	774.5
Community services	788.6	753.9	766.2	316.2	461.0	777.2	784.5	6,592.2
Recreation, personal and other services	13.4	13.3	13.8	6.3	8.0	14.3	14.0	83.7
Total all industries(b)	1,134.8	1,068.2	1,074.0	538.3	545.6	1,083.9	1,088.3	9,676.6
LOCAL GOVERNMENT								
Electricity, gas and water	16.2	15.1	14.7	13.2	1.5	14.7	14.6	127.7
Public administration and defence(c)	135.8	139.3	138.1	87.4	51.0	138.4	138.9	914.4
Other industries	11.6	5.9	6.0	4.3	1.7	6.1	6.1	40.7
Total all industries	163.6	160.4	158.9	104.9	54.2	159.1	159.6	1,082.8
TOTAL PUBLIC								
Agriculture, forestry, fishing and hunting	4.6	5.1	5.1	3.9	1.1	5.0	4.9	44.0
Mining	4.2	3.8	1.7	1.6	0.1	1.7	1.5	30.8
Manufacturing	22.0	14.7	14.8	12.6	2.1	14.7	14.6	151.3
Electricity, gas and water	91.7	82.1	81.9	70.3	10.3	80.6	79.1	859.5
Construction	41.6	33.6	34.0	27.3	6.5	33.7	33.0	364.5
Wholesale trade	2.2	1.6	1.6	1.0	0.6	1.6	1.6	14.3
Retail trade	0.2	0.2	0.2	0.1	0.1	0.2	0.2	1.0
Transport and storage	104.5	101.2	101.7	83.7	17.6	101.3	101.0	1,242.9
Communication	107.7	103.3	103.0	72.3	30.8	103.1	102.9	1,120.1
Finance, property and business services	100.3	85.8	81.4	34.7	46.3	81.0	80.5	722.6
Public administration and defence(c)	334.2	331.3	328.0	194.0	134.6	328.5	329.0	2,701.1
Community services	844.7	804.1	817.2	343.4	485.1	828.5	836.3	7,094.8
Recreation, personal and other services	21.7	21.7	22.3	11.0	11.8	22.8	22.5	185.1
Total all industries	1,679.6	1,588.5	1,592.8	855.8	747.0	1,602.8	1,607.3	14,532.0

See footnotes at end of table.

TABLE 14. EMPLOYED WAGE AND SALARY EARNERS, AUSTRALIA — SECTOR AND INDUSTRY — continued

Industry	Number of employees ('000)						Gross earnings	
	June 1993	March 1994	April 1994	May 1994		June 1994	June Quarter 1994	
	Persons	Persons	Persons	Males	Females	Persons	Persons	
PRIVATE AND PUBLIC								
Mining	69.6	63.2	59.2	53.9	5.2	59.1	59.0	861.6
Manufacturing	894.4	871.6	858.3	621.8	236.3	858.1	852.9	7,003.0
Electricity, gas and water	94.5	84.8	84.5	72.3	10.9	83.3	81.7	885.6
Construction	261.0	240.4	239.7	202.3	40.2	242.5	244.3	2,007.9
Wholesale trade	407.8	407.2	405.1	273.8	134.6	408.3	407.6	3,145.3
Retail trade	781.0	789.5	773.6	358.6	424.6	783.2	777.8	3,557.4
Transport and storage	249.8	263.6	265.0	202.7	64.0	266.6	267.7	2,656.8
Communication	108.8	105.0	104.9	73.4	31.6	105.0	104.9	1,135.1
Finance, property and business services	759.4	726.1	733.1	342.5	390.2	732.7	735.0	6,197.5
Public administration and defence(c)	334.2	331.3	328.0	194.0	134.6	328.5	329.0	2,701.1
Community services	1,409.7	1,415.9	1,395.6	496.3	925.8	1,422.1	1,430.5	10,555.1
Recreation, personal and other services(a)	433.4	444.9	430.6	192.6	244.7	437.3	434.7	2,047.9
Total all industries(d)	5,808.2	5,748.7	5,682.6	3,088.2	2,643.6	5,731.8	5,730.2	42,798.3

(a) Excludes private households employing staff. (b) Includes employees of enterprises classified to Communication. (c) Excludes members of permanent defence forces and employees of overseas embassies, consulates etc. (d) Includes employees of government agencies classified to Agriculture, forestry, fishing and hunting.

TABLE 15. EMPLOYED WAGE AND SALARY EARNERS, NEW SOUTH WALES — SECTOR AND INDUSTRY

Industry	Number of employees (<i>'000</i>)						Gross earnings	
	June 1993	March 1994	April 1994	May 1994		June 1994	June Quarter 1994	
	Persons	Persons	Persons	Males	Females	Persons	Persons	\$m
PRIVATE								
Manufacturing	296.8	300.2	288.5	204.3	82.7	287.0	284.9	2,420.2
Electricity, gas and water; Construction	75.7	82.9	78.0	68.1	10.9	79.0	79.5	645.2
Wholesale trade	156.8	150.3	145.1	94.8	50.0	144.8	144.1	1,237.7
Retail trade	269.2	267.4	264.5	121.3	147.8	269.1	267.7	1,258.4
Transport and storage	47.5	55.9	60.1	42.2	18.8	61.0	61.2	502.6
Finance, property and business services	252.2	249.1	257.1	120.5	136.6	257.1	257.8	2,382.5
Community services	168.7	193.7	183.5	43.0	144.3	187.3	187.3	1,102.0
Recreation, personal and other services(a)	134.2	153.5	153.5	73.3	81.1	154.4	153.0	722.7
Total all industries(b)(e)	1,417.5	1,467.9	1,446.8	782.9	673.0	1,455.9	1,451.9	10,534.1
PUBLIC								
Manufacturing	9.0	4.4	4.5	3.6	0.8	4.4	4.4	*49.8
Electricity, gas and water; Construction	44.8	40.6	40.4	33.7	6.6	40.2	40.0	439.2
Wholesale trade	0.6	0.5	0.5	0.3	0.2	0.5	0.5	3.3
Retail trade	—	—	—	—	—	—	—	—
Transport and storage	38.9	40.2	39.6	33.2	6.1	39.4	39.3	516.2
Communication	37.0	35.1	34.8	24.5	10.3	34.8	34.7	362.4
Finance, property and business services	44.6	34.5	31.9	13.7	18.1	31.8	31.7	285.5
Public administration and defence(c)	89.2	88.3	87.4	53.1	34.8	87.9	87.7	748.9
Community services	264.0	253.9	258.7	124.6	145.4	269.9	268.6	2,244.5
Recreation, personal and other services	8.4	8.6	8.7	4.5	4.2	8.7	8.6	87.6
Total all industries(d)(e)	540.6	510.1	508.6	292.6	227.0	519.6	517.4	4,753.8
PRIVATE AND PUBLIC								
Mining	18.2	16.2	15.5	14.8	0.5	15.4	15.2	254.8
Manufacturing	305.8	304.6	292.9	207.8	83.5	291.4	289.3	2,469.9
Electricity, gas and water	34.9	32.3	32.2	27.4	4.6	32.1	31.9	334.8
Construction	85.6	91.2	86.2	74.3	12.8	87.1	87.6	749.7
Wholesale trade	157.4	150.8	145.6	95.1	50.2	145.3	144.6	1,241.0
Retail trade	269.2	267.4	264.5	121.4	147.8	269.1	267.7	1,258.4
Transport and storage	86.4	96.1	99.8	75.5	24.9	100.4	100.5	1,018.9
Communication	37.4	35.7	35.8	25.0	10.8	35.8	35.8	370.3
Finance, property and business services	296.8	283.7	289.0	134.2	154.7	288.9	289.5	2,668.0
Public administration and defence(c)	89.2	88.3	87.4	53.1	34.8	87.9	87.7	748.9
Community services	432.7	447.6	442.2	167.6	289.7	457.2	455.8	3,346.5
Recreation, personal and other services(a)	142.6	162.1	162.2	77.8	85.3	163.0	161.6	810.3
Total all industries(d)	1,958.2	1,978.0	1,955.4	1,075.6	899.9	1,975.5	1,969.3	15,287.9

(a) Excludes private households employing staff. (b) Includes employees of private enterprises classified to communication. (c) Excludes members of permanent defence forces and employees of overseas embassies, consulates etc. (d) Includes employees of government agencies classified to Agriculture, forestry, fishing and hunting.

(e) Includes employees classified to Mining.

TABLE 16. EMPLOYED WAGE AND SALARY EARNERS, VICTORIA — SECTOR AND INDUSTRY

Industry	Number of employees (<i>'000</i>)					Gross earnings		
	June 1993	March 1994	April 1994	May 1994		June 1994	June Quarter 1994	
	Persons	Persons	Persons	Males	Females	Persons	Persons	
PRIVATE								
Mining	2.8	*2.5	*2.6	*2.4	*0.3	*2.6	*2.6	*21.9
Manufacturing	286.1	263.9	262.9	186.7	78.1	264.9	263.7	2,217.6
Electricity, gas and water: Construction	50.6	39.6	45.6	39.7	*7.8	47.5	48.6	*410.7
Wholesale trade	101.6	113.1	115.6	76.6	39.5	116.1	115.8	923.7
Retail trade	185.0	194.7	195.4	93.8	103.1	196.9	196.5	915.4
Transport and storage	40.2	48.9	48.1	34.5	*13.8	48.3	49.9	356.2
Finance, property and business services	184.0	169.7	176.1	84.3	92.6	177.0	177.7	1,520.5
Community services	158.7	160.8	153.3	78.6	119.9	158.5	158.4	911.7
Recreation, personal and other services(a)	104.9	86.6	79.7	38.5	44.3	82.8	81.7	*364.7
Total all industries(b)	1,114.1	1,080.5	1,079.6	595.2	499.7	1,094.9	1,095.1	7,645.3
PUBLIC								
Agriculture, forestry, fishing and hunting	—	0.4	0.4	0.3	0.2	0.4	0.4	4.6
Mining	1.5	1.3	1.3	1.2	—	1.2	1.1	25.5
Manufacturing	5.1	*3.7	*3.8	*3.5	*0.3	*3.8	*3.8	*40.8
Electricity, gas and water: Construction	31.7	26.7	26.9	22.6	4.0	26.6	25.8	313.4
Wholesale trade	0.3	0.3	0.3	0.2	0.2	0.4	0.3	4.1
Retail trade	—	—	0.1	—	—	0.1	0.1	0.3
Transport and storage	22.4	19.8	22.1	15.7	*6.3	22.0	22.0	306.5
Communication	31.8	31.3	31.2	21.4	9.8	31.2	31.0	369.2
Finance, property and business services	19.1	17.2	16.1	5.8	10.2	16.0	15.8	133.3
Public administration and defence(c)	83.2	77.7	76.0	39.5	36.2	75.7	76.2	543.9
Community services	201.5	189.9	191.4	73.7	119.9	193.6	194.7	1,704.6
Recreation, personal and other services	5.5	4.9	5.3	2.7	2.9	5.6	5.6	37.4
Total all industries	402.3	373.4	375.0	186.6	190.1	376.7	376.8	3,483.8
PRIVATE AND PUBLIC								
Mining	4.3	3.8	3.9	3.6	*0.3	3.8	3.7	47.4
Manufacturing	291.2	267.6	266.8	190.2	78.5	268.6	267.4	2,258.4
Electricity, gas and water	23.5	19.0	19.0	16.3	2.4	18.8	18.3	229.6
Construction	58.8	47.3	53.5	46.0	9.4	55.4	56.1	494.5
Wholesale trade	101.9	113.5	115.9	76.8	39.7	116.5	116.1	927.8
Retail trade	185.0	194.8	195.5	93.8	103.1	196.9	196.5	915.7
Transport and storage	62.7	68.7	70.2	50.2	20.2	70.4	71.9	662.7
Communication	32.0	31.9	31.5	21.5	10.0	31.5	31.4	372.2
Finance, property and business services	203.1	187.0	192.2	90.1	102.9	193.0	193.5	1,653.9
Public administration and defence(c)	83.2	77.7	76.0	39.5	36.2	75.7	76.2	543.9
Community services	360.3	350.7	344.7	112.3	239.8	352.2	353.1	2,616.3
Recreation, personal and other services(a)	110.4	91.5	85.0	41.2	47.2	88.4	87.2	402.1
Total all industries(d)	1,516.4	1,453.8	1,454.6	781.8	689.7	1,471.6	1,471.9	11,129.1

(a) Excludes private households employing staff.

(b) Excludes employees of private enterprises classified to Communication.

(c) Excludes members of permanent defence

TABLE 17. EMPLOYED WAGE AND SALARY EARNERS, QUEENSLAND — SECTOR AND INDUSTRY

Industry	Number of employees ('000)						Gross earnings	
	June 1993	March 1994	April 1994	May 1994		June 1994	June Quarter 1994	
	Persons	Persons	Persons	Males	Females	Persons	Persons	\$m
PRIVATE								
Mining	17.7	16.9	17.2	15.9	*1.4	17.3	17.4	221.4
Manufacturing	118.5	128.6	130.5	100.6	30.8	131.5	130.4	1,016.8
Electricity, gas and water; Construction	41.1	41.2	35.6	27.9	*6.4	34.3	35.1	255.5
Wholesale trade	58.1	64.2	67.9	48.8	19.9	68.7	68.2	444.1
Retail trade	143.7	149.8	139.3	65.4	75.7	141.1	138.4	636.9
Transport and storage	26.3	26.8	25.4	19.3	6.5	25.8	26.1	184.2
Finance, property and business services	92.7	88.6	91.2	40.9	52.0	92.9	93.8	599.5
Community services	84.6	96.9	90.0	25.1	65.1	90.2	93.2	535.0
Recreation, personal and other services(a)	77.6	80.9	82.5	32.0	51.9	83.9	85.0	372.7
Total all Industries(b)	660.5	694.0	679.7	375.9	309.7	685.6	687.7	4,266.8
PUBLIC								
Agriculture, forestry, fishing and hunting	0.1	0.1	0.1	0.1	*0.0	0.1	0.1	0.5
Manufacturing	3.8	3.4	3.4	3.2	*0.1	3.4	3.4	32.0
Electricity, gas and water; Construction	21.9	16.0	15.9	13.3	2.0	15.3	15.3	132.8
Wholesale trade	0.6	0.3	0.3	0.2	0.1	0.3	0.4	2.6
Retail trade	0.2	0.2	0.1	—	0.1	0.1	0.1	0.5
Transport and storage	21.6	*21.0	21.0	18.7	2.4	21.1	21.0	207.1
Communication	16.2	16.1	16.2	11.6	4.6	16.3	16.3	173.4
Finance, property and business services	12.0	11.4	11.2	5.1	6.1	11.3	11.2	95.2
Public administration and defence(c)	61.7	65.2	64.5	43.2	21.2	64.4	64.4	479.6
Community services	141.8	135.8	138.3	57.9	78.9	136.8	141.6	1,154.0
Recreation, personal and other services	2.0	2.1	2.2	0.8	1.3	2.1	2.1	14.2
Total all Industries	282.1	271.5	273.1	154.3	116.8	271.1	275.9	2,291.9
PRIVATE AND PUBLIC								
Mining	17.7	16.9	17.2	15.9	*1.4	17.3	17.4	221.4
Manufacturing	122.3	132.0	133.8	103.8	31.0	134.8	133.8	1,048.8
Electricity, gas and water	12.4	12.4	12.1	10.2	1.5	11.7	11.7	104.8
Construction	50.6	44.7	39.3	31.1	6.9	37.9	38.8	283.5
Wholesale trade	58.8	64.5	68.2	49.0	20.0	69.0	68.5	446.7
Retail trade	143.9	150.0	139.4	65.5	75.7	141.2	138.5	637.5
Transport and storage	48.0	*47.8	46.4	37.9	8.9	46.8	47.1	391.3
Communication	16.2	16.2	16.3	11.7	4.7	16.3	16.4	174.0
Finance, property and business services	104.7	100.0	102.4	46.0	58.2	104.2	105.1	694.7
Public administration and defence(c)	61.7	65.2	64.5	43.2	21.2	64.4	64.4	479.6
Community services	226.4	232.6	228.3	83.1	143.9	227.0	234.8	1,689.0
Recreation, personal and other services(a)	79.6	83.0	84.7	32.8	53.2	86.0	87.1	386.9
Total all Industries(d)	942.5	965.5	952.8	530.2	426.5	956.7	963.6	6,558.7

(a) Excludes private households employing staff. (b) Includes employees of private enterprises classified to Communication. (c) Excludes members of permanent defence forces and employees of overseas embassies, consulates etc. (d) Includes employees of government agencies classified to Agriculture, forestry, fishing and hunting.

TABLE 18. EMPLOYED WAGE AND SALARY EARNERS, SOUTH AUSTRALIA — SECTOR AND INDUSTRY

Industry	Number of employees ('000)						Gross earnings	
	June 1993	March 1994	April 1994	May 1994		June 1994	June Quarter 1994	
	Persons	Persons	Persons	Males	Females	Persons	Persons	
PRIVATE								
Manufacturing	83.9	83.1	82.3	59.4	22.6	81.9	81.7	608.6
Electricity, gas and water; Construction	9.9	11.8	11.2	9.5	2.1	11.6	11.2	70.0
Wholesale trade	36.4	26.0	25.7	18.6	8.8	27.4	28.5	176.1
Retail trade	56.7	54.1	53.7	23.9	30.0	53.9	53.0	219.8
Transport and storage	*14.5	*10.2	9.0	7.3	*2.2	9.5	9.1	72.7
Finance, property and business services	45.6	56.6	50.7	25.4	22.1	47.6	47.2	375.4
Community services	51.9	62.6	58.6	15.2	43.7	58.8	58.3	333.7
Recreation, personal and other services(a)	23.8	30.0	29.6	11.6	18.4	30.0	29.3	130.7
Total all industries(b)(e)	325.8	336.3	323.3	173.2	150.2	323.4	321.0	2,015.4
PUBLIC								
Manufacturing	2.7	2.0	2.0	1.6	0.4	2.0	2.0	17.8
Electricity, gas and water; Construction	12.4	10.9	10.6	9.0	1.4	10.3	9.4	114.0
Wholesale trade	0.1	0.1	0.1	0.1	—	0.1	0.1	1.3
Retail trade	—	—	—	—	—	—	—	0.2
Transport and storage	6.9	6.8	6.8	5.9	*0.8	6.7	6.6	78.0
Communication	9.1	7.9	7.9	5.7	2.1	7.8	7.7	79.0
Finance, property and business services	9.5	9.0	9.0	4.1	4.8	8.9	8.8	88.3
Public administration and defence(c)	20.2	20.0	19.2	11.2	8.0	19.3	19.1	168.5
Community services	81.2	78.4	79.8	30.3	49.2	79.5	80.4	701.3
Recreation, personal and other services	1.8	2.3	2.4	1.0	1.5	2.5	2.3	13.7
Total all industries(d)(e)	144.9	138.3	138.5	69.5	68.4	137.9	137.4	1,270.3
PRIVATE AND PUBLIC								
Manufacturing	86.6	85.1	84.2	61.0	23.0	83.9	83.7	626.4
Electricity, gas and water	8.3	6.9	6.8	5.9	0.7	6.6	5.9	66.9
Construction	14.1	15.8	14.9	12.5	2.8	15.4	14.8	117.0
Wholesale trade	36.6	26.1	25.9	18.7	8.8	27.5	28.7	177.4
Retail trade	56.7	54.1	53.7	24.0	30.0	54.0	53.0	220.0
Transport and storage	*21.4	17.0	15.8	13.1	*3.0	16.2	15.7	150.7
Communication	9.2	8.0	7.9	5.7	2.1	7.8	7.8	79.3
Finance, property and business services	55.1	65.6	59.7	29.5	27.0	56.5	56.0	463.7
Public administration and defence(c)	20.2	20.0	19.2	11.2	8.0	19.3	19.1	168.5
Community services	133.1	141.0	138.4	45.5	92.9	138.4	138.7	1,035.0
Recreation, personal and other services(a)	25.6	32.4	32.0	12.5	19.9	32.4	31.6	144.5
Total all industries(d)(e)	470.7	474.5	461.8	242.6	218.7	461.3	458.3	3,285.7

(a) Excludes private households employing staff. (b) Includes employees of private enterprises classified to Communication. (c) Excludes members of permanent defence forces and employees of overseas embassies, consulates etc. (d) Includes employees of government agencies classified to Agriculture, forestry, fishing and hunting. (e) Includes employees classified to mining.

TABLE 19. EMPLOYED WAGE AND SALARY EARNERS, WESTERN AUSTRALIA — SECTOR AND INDUSTRY

Industry	Number of employees ('000)					Gross earnings		
	June 1993	March 1994	April 1994	May 1994		June 1994	June Quarter 1994	
	Persons	Persons	Persons	Males	Females	Persons	Persons	
PRIVATE								
Mining	21.4	20.1	15.8	13.6	2.2	15.8	15.9	259.7
Manufacturing	60.7	57.7	54.6	40.4	13.0	53.4	53.0	412.9
Electricity, gas and water; Construction	31.5	23.5	26.7	22.1	5.2	27.3	27.2	199.6
Wholesale trade	40.2	40.1	36.0	24.0	12.3	36.3	36.0	255.3
Retail trade	77.6	79.0	78.9	33.7	46.4	80.1	80.2	340.4
Transport and storage	10.5	14.0	14.3	10.9	*3.5	14.4	14.2	*248.1
Finance, property and business services	56.3	52.1	52.5	25.0	27.5	52.5	53.4	440.8
Community services	68.0	62.6	60.9	*20.6	44.1	64.7	64.0	393.3
Recreation, personal and other services(a)	42.2	46.5	36.7	15.3	21.9	37.2	37.0	166.6
Total all industries(b)	408.6	395.7	376.5	205.7	176.0	381.8	381.0	2,717.1
PUBLIC								
Agriculture, forestry, fishing and hunting	1.5	1.5	1.5	1.1	0.3	1.5	1.4	13.4
Manufacturing	0.3	*0.1	0.1	0.1	—	0.1	0.1	2.4
Electricity, gas and water; Construction	13.1	13.4	13.8	12.2	*1.5	13.7	13.6	139.5
Wholesale trade	0.5	0.3	0.3	0.2	0.1	0.3	0.3	2.8
Retail trade	—	—	—	—	—	—	—	—
Transport and storage	9.5	8.3	7.7	7.0	0.7	7.7	7.6	83.1
Communication	8.5	8.2	8.2	5.8	2.5	8.3	8.2	86.0
Finance, property and business services	9.5	8.6	8.4	3.5	4.8	8.3	8.2	71.6
Public administration and defence(c)	27.5	29.6	29.6	17.7	12.1	29.8	30.0	226.4
Community services	92.7	82.1	83.5	29.8	51.6	81.4	83.7	696.9
Recreation, personal and other services	1.9	1.9	1.9	0.9	1.0	1.9	1.9	13.6
Total all industries	165.0	154.1	155.0	78.3	74.7	153.0	155.2	1,335.7
PRIVATE AND PUBLIC								
Mining	21.4	20.1	15.8	13.6	2.2	15.8	15.9	259.8
Manufacturing	61.1	57.9	54.7	40.5	13.0	53.5	53.1	415.2
Electricity, gas and water	9.1	8.7	8.7	7.7	0.9	8.7	8.6	88.9
Construction	35.5	28.2	31.8	26.5	5.8	32.3	32.3	250.1
Wholesale trade	40.7	40.4	36.3	24.2	12.4	36.6	36.3	258.2
Retail trade	77.6	79.0	78.9	33.7	46.4	80.1	80.2	340.4
Transport and storage	20.0	22.3	22.0	17.9	4.2	22.1	21.8	*331.2
Communication	8.6	8.2	8.3	5.8	2.5	8.3	8.3	86.5
Finance, property and business services	65.8	60.8	60.8	28.5	32.3	60.8	61.6	512.4
Public administration and defence(c)	27.5	29.6	29.6	17.7	12.1	29.8	30.0	226.4
Community services	160.7	144.8	144.4	50.4	95.6	146.1	147.7	1,090.2
Recreation, personal and other services(a)	44.1	48.4	38.6	16.2	22.8	39.1	38.9	180.2
Total all industries(d)	573.7	549.8	531.5	284.0	250.7	534.7	536.2	4,052.9

(a) Excludes private households employing staff. (b) Includes employees of private enterprises classified to Communication. (c) Excludes members of permanent defence forces and employees of overseas embassies, consulates etc. (d) Includes employees of government agencies classified to Agriculture, forestry, fishing and hunting.

TABLE 20. EMPLOYED WAGE AND SALARY EARNERS, TASMANIA — SECTOR AND INDUSTRY

Industry	Number of employees ('000)					Gross earnings		\$m
	June 1993	March 1994	April 1994	May 1994		June 1994	June Quarter 1994	
	Persons	Persons	Persons	Males	Females	Persons	Persons	
PRIVATE								
Mining	2.1	2.0	1.8	1.7	0.1	1.8	1.8	*23.0
Manufacturing	21.5	18.0	19.3	13.8	5.4	19.2	19.0	135.4
Electricity, gas and water; Construction	4.2	5.5	6.7	5.9	*0.9	6.8	6.8	45.8
Wholesale trade	7.7	7.3	8.3	6.7	1.9	8.5	8.5	55.7
Retail trade	26.8	20.3	19.0	9.9	9.2	19.1	19.0	85.5
Transport and storage	4.0	3.6	3.4	2.5	*0.9	3.5	3.3	24.9
Finance, property and business services	11.6	10.3	10.5	4.6	6.0	10.6	10.6	62.6
Community services	16.3	17.0	14.1	*4.6	10.5	15.1	14.8	82.2
Recreation, personal and other services(a)	11.8	11.3	11.3	4.1	7.1	11.2	10.9	41.8
Total all industries(b)	105.9	95.2	94.5	53.8	42.0	95.8	94.9	557.0
PUBLIC								
Agriculture, forestry, fishing and hunting	0.7	0.7	0.7	0.5	0.1	0.6	0.6	5.6
Manufacturing	0.1	0.1	0.1	0.1	—	0.1	0.1	0.7
Electricity, gas and water; Construction	5.1	4.1	3.7	3.1	0.5	3.7	3.6	38.2
Wholesale trade	—	—	—	—	—	—	—	0.2
Retail trade	—	—	—	—	—	—	—	—
Transport and storage	1.9	2.0	1.5	1.3	0.1	1.5	1.4	16.4
Communication	2.3	2.2	2.2	1.7	0.5	2.2	2.2	22.7
Finance, property and business services	1.4	0.9	0.9	0.4	0.5	0.9	0.9	7.1
Public administration and defence(c)	10.4	8.5	9.8	6.1	3.7	9.8	9.8	77.4
Community services	26.3	28.2	28.4	11.2	18.2	29.5	28.9	226.8
Recreation, personal and other services	0.6	0.6	0.6	0.3	0.3	0.7	0.7	5.4
Total all industries	48.8	47.2	47.9	24.8	24.1	48.9	48.2	400.5
PRIVATE AND PUBLIC								
Mining	2.1	2.0	1.8	1.7	0.1	1.8	1.8	*23.0
Manufacturing	21.6	18.1	19.4	13.9	5.4	19.3	19.1	136.1
Electricity, gas and water	3.8	3.0	2.8	2.4	0.4	2.7	2.6	31.1
Construction	5.5	6.6	7.7	6.7	1.0	7.8	7.7	52.9
Wholesale trade	7.7	7.3	8.3	6.7	1.9	8.5	8.5	55.9
Retail trade	26.8	20.3	19.0	9.9	9.2	19.1	19.0	85.5
Transport and storage	5.9	5.7	4.9	3.9	*1.1	4.9	4.8	41.3
Communication	2.3	2.2	2.2	1.7	0.5	2.2	2.2	22.7
Finance, property and business services	13.0	11.2	11.4	5.0	6.5	11.5	11.5	69.7
Public administration and defence(c)	10.4	8.5	9.8	6.1	3.7	9.8	9.8	77.4
Community services	42.6	45.2	42.6	15.9	28.7	44.6	43.7	309.1
Recreation, personal and other services(a)	12.5	11.9	11.9	4.4	7.4	11.9	11.6	47.2
Total all industries(d)	154.7	142.5	142.4	78.7	66.1	144.8	143.1	957.5

(a) Excludes private households employing staff. (b) Includes employees of private enterprises classified to Communication. (c) Excludes members of permanent defence forces and employees of overseas embassies, consulates etc. (d) Includes employees of government agencies classified to Agriculture, forestry, fishing and hunting.

TABLE 21. EMPLOYED WAGE AND SALARY EARNERS, NORTHERN TERRITORY — INDUSTRY

Industry	Number of employees ('000)						Gross earnings	
	June 1993	March 1994	April 1994	May 1994		June 1994	June Quarter 1994	
	Persons	Persons	Persons	Males	Females	Persons	Persons	\$m
Mining	2.2	1.9	1.9	1.6	0.2	1.9	1.9	21.1
Manufacturing	2.1	1.9	2.0	1.5	0.6	2.1	2.1	13.5
Electricity, gas and water	0.9	0.9	0.9	0.8	0.1	0.9	0.9	9.9
Construction	*5.5	2.5	2.0	1.8	0.3	2.1	2.1	20.6
Wholesale trade	1.5	2.1	2.1	1.6	*0.6	2.2	2.2	17.1
Retail trade	7.2	8.1	9.4	4.3	5.1	9.4	9.3	44.8
Transport and storage	1.8	2.0	2.2	1.5	0.5	2.1	2.1	19.1
Communication	1.0	0.9	0.9	0.7	0.3	1.0	1.1	10.7
Finance, property and business services	*5.6	*5.7	*5.8	*3.1	2.9	6.0	6.0	38.6
Public administration and defence(a)	6.0	6.2	6.2	3.3	2.9	6.2	6.4	58.0
Community services	15.8	16.4	16.4	6.1	10.6	16.7	16.6	137.0
Recreation, personal and other services(b)	7.3	5.4	6.0	2.8	3.6	6.4	6.5	32.9
Total all industries(c)	56.9	54.0	56.0	29.1	27.7	56.9	57.2	423.2

(a) Excludes members of permanent defence forces and employees of overseas embassies, consulates etc. (b) Excludes private households employing staff. (c) Includes employees of government agencies classified to Agriculture, forestry, fishing and hunting.

TABLE 22. EMPLOYED WAGE AND SALARY EARNERS, AUSTRALIAN CAPITAL TERRITORY — INDUSTRY

Industry	Number of employees ('000)						Gross earnings	
	June 1993	March 1994	April 1994	May 1994		June 1994	June Quarter 1994	
	Persons	Persons	Persons	Males	Females	Persons	Persons	\$m
Manufacturing	3.7	4.4	4.4	3.1	1.4	4.5	4.4	34.6
Electricity, gas and water	1.5	1.5	1.8	1.6	0.3	1.8	1.8	19.5
Construction	5.5	4.1	4.4	3.4	1.1	4.5	4.9	39.5
Wholesale trade	3.2	2.6	2.7	1.7	*1.0	2.7	2.6	21.3
Retail trade	14.6	15.9	13.2	6.1	7.4	13.5	13.5	55.1
Transport and storage	3.7	4.1	3.7	2.6	1.1	3.8	3.8	41.7
Communication	2.1	1.9	1.9	1.2	0.8	1.9	2.0	19.4
Finance, property and business services	15.2	12.2	11.7	6.2	5.8	12.0	11.8	96.6
Public administration and defence(a)	36.1	35.9	35.3	19.9	15.5	35.4	35.4	398.4
Community services	38.2	37.6	38.7	15.5	24.5	40.0	40.1	332.2
Recreation, personal and other services(b)	11.3	10.3	10.1	4.8	5.3	10.2	10.1	43.8
Total all industries(c)	135.3	130.6	128.1	66.2	64.2	130.4	130.5	1,103.3

(a) Excludes members of permanent defence forces and employees of overseas embassies, consulates etc. (b) Excludes private households employing staff. (c) Includes Mining and employees of government agencies classified to Agriculture, forestry, fishing and hunting.

TABLE 23. EMPLOYED WAGE AND SALARY EARNERS, PRIVATE SECTOR — EMPLOYER UNIT SIZE(a)

	<i>Less than 20 employees</i>		<i>20-99 employees</i>		<i>100 or more employees</i>		<i>Total</i>	
	<i>May 1994</i>	<i>June Quarter 1994</i>	<i>May 1994</i>	<i>June Quarter 1994</i>	<i>May 1994</i>	<i>June Quarter 1994</i>	<i>May 1994</i>	<i>June Quarter 1994</i>
	<i>Persons ('000)</i>	<i>Gross Earnings (\$m)</i>	<i>Persons ('000)</i>	<i>Gross Earnings (\$m)</i>	<i>Persons ('000)</i>	<i>Gross Earnings (\$m)</i>	<i>Persons ('000)</i>	<i>Gross Earnings (\$m)</i>
AUSTRALIA BY INDUSTRY								
Mining	3.0	32.8	6.6	70.1	47.8	727.9	57.4	830.8
Manufacturing	173.4	1,040.9	202.0	1,474.1	468.1	4,336.7	843.5	6,851.7
Electricity, gas and water	0.2	1.5	0.4	3.3	2.0	21.2	2.6	26.1
Construction	136.9	945.0	47.8	411.9	24.1	286.5	208.7	1,643.4
Wholesale trade	164.0	1,093.9	120.2	1,001.1	122.5	1,036.1	406.7	3,131.0
Retail trade	273.1	1,241.5	127.8	694.6	382.1	1,620.4	783.0	3,556.4
Transport and storage	62.9	398.3	49.1	372.8	53.3	642.7	165.4	1,413.8
Finance, property and business services	261.0	1,830.8	115.8	1,170.1	274.9	2,474.0	651.7	5,474.9
Community services	200.1	1,126.6	126.9	738.1	266.5	1,595.7	593.6	3,460.3
Recreation, personal and other services(b)	162.6	570.6	127.1	577.6	124.8	714.6	414.5	1,862.8
Total all industries(c)	1,438.2	8,286.0	924.1	6,517.1	1,766.7	13,463.2	4,129.0	28,266.3
STATES AND TERRITORIES								
New South Wales	489.6	2,944.3	299.9	2,320.2	666.4	5,269.6	1,455.9	10,534.1
Victoria	367.2	2,147.4	261.8	1,819.4	465.9	3,678.4	1,094.9	7,645.3
Queensland	251.4	1,371.4	140.7	902.9	293.5	1,992.5	685.6	4,266.8
South Australia	106.6	569.6	85.2	583.8	131.6	862.0	323.4	2,015.4
Western Australia	146.1	831.4	81.9	574.8	153.7	1,311.0	381.8	2,717.1
Tasmania	40.8	207.7	24.4	140.2	30.6	209.1	95.8	557.0
Northern Territory	12.9	75.7	13.6	86.4	9.4	55.6	36.0	217.8
Australian Capital Territory	23.6	138.4	16.5	89.3	15.4	85.0	55.5	312.7

(a) See Appendix 2 and paragraph 11 of Explanatory Notes. (b) Excludes private households employing staff. (c) Includes employees of private enterprises classified to Communication.

EXPLANATORY NOTES

Introduction

This publication contains results of the quarterly Survey of Employment and Earnings (SEE) which was introduced in the September quarter 1983. The survey is designed to obtain, from employer units, information on numbers of wage and salary earners employed each month and their quarterly earnings. It replaced the civilian employees series, based principally on information obtained from payroll tax returns, which was discontinued after April 1980.

Scope of the survey

2. All wage and salary earners who received pay in any pay period ending within the quarter were represented in the survey, except: members of the Australian permanent defence forces; employees of enterprises in the private sector primarily engaged in agriculture, forestry, fishing and hunting; employees in private households employing staff; employees of overseas embassies, consulates, etc; employees based outside Australia.

3. An indicator of the number of employed wage and salary earners out of scope to the year ended June 1994 is shown in the following table as:

New South Wales	62,545
Victoria	43,046
Queensland	48,353
South Australia	19,673
Western Australia	25,000
Tasmania	9,802
Northern Territory	4,120
Australian Capital Territory	7,568
<hr/>	
Australia	220,107

Estimates of the number of employees in private sector agriculture and private households were derived from the Labour Force Survey while data relating to the number of permanent defence force members are based upon information supplied to the ABS by the Department of Defence.

Statistical unit

4. The statistical unit for the survey comprises all activities of an employer in a particular State. Each statistical unit was classified to an industry which reflected the predominant activity of the business in the State. In a small number of cases where an employer had a significant number of employees in more than one industry, a separate statistical unit was created for each industry. Periodically, a review is undertaken to determine whether existing enterprises which are split into separate statistical units should continue to report on that basis. In addition, larger employers which are not currently split into separate statistical units are examined to decide

whether they should be split for the purpose of reporting their employees. Any changes in reporting arrangements as a result of such reviews can have an impact on the industry estimates at the time of their implementation.

Survey methodology and design

5. This survey is conducted by mail each quarter from a sample of approximately 10,000 employer units. Of these, approximately 7,500 are in the private sector and 2,500 are in the public sector. However, since the December quarter 1991 survey, data for a number of Commonwealth Government and ACT Government departments have been collected electronically.

6. Information on monthly number of employees and quarterly earnings is collected each quarter. For the first and last month of each quarter, only the total number of persons is collected; for the mid month of each quarter, details of males and females, full-time and part-time are collected.

7. Private sector statistical units are stratified by State, industry, and number of employees. Public sector statistical units are further stratified by institutional sector and level of government. An equal probability sample is selected from each stratum.

Classification by industry

8. This publication presents statistics classified by industry. Each statistical unit is classified to an industry which reflects the predominant activity of the business in the State. In a small number of cases where a business has a significant number of employees in more than one industry, a separate statistical unit was created for each industry. Periodically, a review is undertaken to determine whether existing enterprises which are split into separate statistical units should continue to report on that basis.

9. The 1983 edition of the *Australian Standard Industrial Classification* Volume 1 (1201.0) and Volume 2 (1202.0) (ASIC) has been used to classify the statistical units in the survey. Statistics in this publication are presented at ASIC division level only. However, industry data are available at a finer industry level on request.

Standard Institutional Sector Classification of Australia (SISCA)

10. SISCA is a system for classifying institutional units by broad economic functions and is a key component of the general national accounting framework. For the purposes of these statistics the classification has been used to separate the public sector into public business enterprises (trading and financial) and general government enterprises. Certain public sector data have been classified by SISCA and are presented in Tables 8, 9 and 10.

Employer unit size classification

11. Data presented in Table 23 show the concentration of employees in employer units in three size ranges. Over a period, the composition of these categories will vary as some employer units migrate from one size group to another due to changes in their employment levels. This will affect changes over time in the distribution of employees by size of employer unit.

Reliability of estimates

12. Estimates are subject to sampling and non-sampling errors. For more information refer to Appendix 1 - Technical Note.

Interpretation of estimates of movements

13. While estimates of employed wage and salary earners are presented in this publication for each month of the quarter, the survey is conducted quarterly and the sample of employer units is updated each quarter to reflect changes in the ABS register of business units, from which the sample is selected. These changes arise from the emergence of new businesses, takeovers and mergers, changes to industry classification, changes in the number of employees, and businesses which have ceased operations. Such updating of the register can contribute to sudden changes in the estimates of employed wage and salary earners, and earnings.

14. Estimates of monthly movements within each quarter arise solely from changes in reported number of employees by employer units but movements between quarters also reflect changes resulting from updating the survey sample.

Seasonal Adjustment

15. Seasonal adjustment is a means of removing the estimated effects of normal seasonal variation from the series so that the effects of other influences on the series can be more clearly recognised. Seasonal adjustment does not aim to remove the irregular or non-seasonal influences which may be present in any particular month. Influences that are volatile or unsystematic can still make it difficult to interpret the movement of the series even after adjustment for seasonal variation. This means that quarter-to-quarter movements of seasonally adjusted estimates may not be reliable indicators of trend behaviour.

16. The series have been seasonally adjusted from September 1983 and the historical series can be made available on request. The seasonal factors are reviewed annually to take account of each additional year's original data. The most recent review took place in the March quarter 1994.

17. Details about the method of seasonal adjustment of these series are available on request.

Trend Estimates

18. The ABS considers that trend estimates provide a more reliable guide to the underlying direction of the data, and are more suitable than either the seasonally adjusted or original data for most business decisions and policy advice.

19. The trend estimates in this publication, obtained by dampening out the irregular component from the seasonally adjusted series, are calculated using the centred 13-term Henderson moving average. Estimates for the six most recent months cannot be calculated using this centred average method; instead an asymmetric average is used. This can lead to revisions in the trend estimates for the last six months when data become available for later months. Revisions of trend estimates will also occur with revisions to the original data and re-estimation of seasonal adjustment factors. Prior to the March quarter 1994 issue, trend estimates were calculated using a centred 23-term Henderson moving average of the seasonally adjusted series.

20. If a series is highly volatile then the trend estimates will be subject to greater revision for the latest few months as data become available. However, it is important to note that this does not make the trend series inferior to the seasonally adjusted or original series. In such cases the effect of the irregular component on overall movements will remain in the seasonally adjusted and the original estimates but not in the trend series.

21. For information about ABS procedures for deriving trend estimates and analysis of advantages of using them over alternative techniques for monitoring trends, refer to the three ABS Information Papers:

- *A Guide to Interpreting Time Series - Monitoring 'Trends': an Overview* (1348.0);
- *A Guide to Smoothing Series - Estimates of 'Trend'* (1316.0); and
- *Time Series Decomposition - An Overview* (1317.0).

Two feature articles which have appeared in the ABS monthly publication *Australian Economic Indicators* may also be of interest:

- *Picking Turning Points in the Economy* (April 1991); and
- *Smarter Data Use* (March 1992).

Comparability of results with the Labour Force Survey

22. The ABS publishes a number of independently obtained series of employment estimates.

23. The monthly Labour Force Survey (LFS) collects data by interview from a sample of about 29,000 private and non-private dwellings, using trained interviewers. Self-employed persons are included in the Labour Force Survey. The estimates are published in *The Labour Force, Australia, Preliminary* (6202.0) and *The Labour Force, Australia* (6203.0). There are conceptual and methodological reasons for differences in the estimates produced by the two surveys. These are discussed in an *Information Paper: Comparison of Employment Estimates from the Labour Force Survey and the Survey of Employment and Earnings* (6263.0).

24. Since the introduction of the SEE series in the September quarter 1983, the estimates of the number of wage and salary earners have been lower than those from the LFS. The difference between the two series started to widen during 1989 and has continued to grow to its present level of nearly 750,000.

25. When making comparisons of the wage and salary earners components of the two surveys it must be borne in mind that SEE draws its sample from the ABS register of businesses while LFS is a household survey. Because of this it is important to note that, on occasions, the register can be subject to undercoverage of business units and that it can be affected by delays in the birth of new businesses to it. This can, therefore, lead to undercoverage of samples selected from the register, such as SEE, while the LFS as a household based collection will not. A study is being undertaken in order to identify the extent of undercoverage on the register.

26. Separate estimates of full-time and part-time employees are included in Table 11. For definitions of these terms, see Appendix 2 - Glossary. This table was first published in the June quarter 1987 issue of this publication and has not been published for previous quarters back to September 1983. This information is available on request. For the reasons outlined above in paragraph 25, it is difficult to compare estimates of full-time and part-time employees derived from the SEE with those produced from the LFS. Generally, the number of full-time employees is higher in the LFS series, and the number of part-time employees is higher in the SEE series. In the LFS, a person who works more than 35 hours a week in total in two (or more) part-time jobs is classified as working full-time. However, in this situation, the SEE would show two part-time jobs as having been filled.

27. The ABS considers that the Labour Force series provides the better indicator of overall employment movements at the Australian and State level. The aggregate employment estimates in the quarterly National Accounts are based on that source.

Comparability of results with the Average Weekly Earnings survey

28. The SEE collects total quarterly employee earnings primarily for use in estimating the gross domestic product

component of the Australian National Accounts. Whilst average employee earnings can be derived from these data, the results will not be comparable with those from the Survey of Average Weekly Earnings (AWE) published in *Average Weekly Earnings, States and Australia* (6302.0). The SEE collects the sum of employee earnings paid in all pay periods ending in a quarter and the results will be affected by the varying number of pay periods from quarter to quarter, whereas the AWE relates to a specified pay period within a quarter and is not subject to such influences. In addition, certain types of payments within the scope of the SEE, such as retrospective pay, pay in advance, leave loadings and severance, termination and redundancy payments are specifically excluded from the AWE. The SEE earnings data are also subject to seasonal variations particularly in December and March quarters due to the incidence of holidays taken in January being paid in advance and the earnings being reported in December quarter figures.

Related publications

29. Users may also wish to refer to the following publications which are available on request:

The Labour Force, Australia (6203.0) — issued monthly

Information Paper: Comparison of Employment Estimates from the Labour Force Survey and the Survey of Employment and Earnings (6263.0) — issued 11 July 1985

Average Weekly Earnings, Australia (Preliminary) (6301.0) and *Average Weekly Earnings, States and Australia* (6302.0) — issued quarterly

Labour Statistics, Australia (6101.0) — issued annually

A Guide to Labour Statistics (6102.0) — issued 10 February 1986

Small Business in Australia 1993 (1321.0) — issued November 1993

Labour Force Projections, Australia, 1992-2005 (6260.0) — issued 11 November 1991.

30. Current publications produced by the ABS are listed in the *Catalogue of Publications and Products, Australia* (1101.0). The ABS also issues, on Tuesdays and Fridays, a *Publications Advice* (1105.0) which lists publications to be released within the next few days. The Catalogue and Publications Advice are available from any ABS office.

Unpublished statistics

31. In some cases, the ABS can also make available other information which is not published. This information may be made available in one or more of the following forms: microfiche, photocopy, data tape, computer print-out, diskette, clerically-extracted tabulation. Generally, a charge is made for providing unpublished information. In-

quiries should be made to the contact officer whose name appears in the Inquiries box at the front of this publication.

Symbols and other usages

- nil or rounded to zero
- r revised
- * subject to sampling variability too high for most practical purposes. *See paragraph 3 of Appendix I - Technical Note*

Where figures have been rounded, discrepancies may occur between sums of the component items and totals.

APPENDIX 1 - TECHNICAL NOTE

Reliability of estimates

Estimates for both the private and public sectors in this publication are subject to sampling variability because they are based on information relating to a sample of employer units rather than a full enumeration, (i.e. they may differ from the figures that would have been produced if the information had been obtained from all employer units). This difference, called sampling error, should not be confused with inaccuracy that may occur because of imperfections in reporting by respondents or in processing by the ABS; such inaccuracy is referred to as non-sampling error and may occur in any enumeration, whether it be a full count or sample. Efforts have been made to reduce the non-sampling error by careful design of questionnaires, detailed checking of returns and quality control of processing.

2. The sampling error associated with any estimate can be estimated from the sample results. One measure of sampling error is given by the *standard error* which indicates the degree to which an estimate may vary from the value that would have been obtained from a full enumeration (the 'true' figure). There are about two chances in three that a sample estimate differs from the true value by less than one standard error, and about nineteen chances in twenty that the difference will be less than two standard errors.

3. If the standard error of an estimate is large relative to the size of the estimate, the usefulness of that estimate is seriously impaired. For the tables in this publication, estimates with standard errors greater than 25 per cent of the estimate have been labelled with an asterisk.

4. Standard errors of estimates of *level*, by industry, are shown in Table A for the private sector and Table B for the public sector and relate only to the third month of the quarter. As the survey is conducted quarterly from a common sample of employer units, who report details of employees for each month of the quarter, standard errors

on all estimates for total persons employed in each month are of a similar magnitude.

5. Standard errors of estimates of *movements*, provide a measure of the reliability of changes in the level of an estimate. Tables A and B show standard errors for movements in the level of estimates for the private and public sectors respectively for persons between the third month of successive quarters. Annual movement standard errors are also shown and relate to March 1992 - March 1993 movements.

6. An example of the use of standard error on *levels* is as follows. If the estimated number of wage and salary earners was 5,800,000 with a standard error of 34,000, then there would be about two chances in three that a full enumeration would have given a figure in the range 5,766,000 to 5,834,000 and about nineteen chances in twenty that it would be in the range 5,732,000 to 5,868,000.

7. An example of the use of standard error on *movements* is as follows. If the estimated standard error for a quarterly change estimate of wage and salary earners was 15,000 and the quarterly change estimate between two quarters was 40,000 persons, then there would be about two chances in three that a full enumeration would have given a quarterly change estimate in the range 25,000 to 55,000 persons and about nineteen chances in twenty that it would be in the range 10,000 to 70,000 persons.

8. Quarterly movements in estimates of employed wage and salary earners are considered to be statistically significant where they exceed two standard errors.

9. Standard errors for earnings are approximately the same relative size as standard errors for number of employees. Detailed standard errors for both employment and earnings are available on request.

TABLE A. EMPLOYED WAGE AND SALARY EARNERS, STATES AND TERRITORIES — PRIVATE SECTOR :
STANDARD ERRORS, JUNE 1994, PERSONS
(*000)

Industry	NSW	Vic.	Qld	SA	WA	Tas.	NT	ACT	Aust.
LEVEL									
Mining	0.6	0.8	1.8	0.4	0.7	0.4	0.3	—	2.2
Manufacturing	11.6	10.5	8.6	4.3	3.4	1.8	0.2	0.3	18.7
Construction	9.3	8.7	5.2	1.5	4.2	1.2	0.3	0.7	14.5
Wholesale trade	14.0	9.0	7.3	4.2	3.9	1.1	0.4	0.5	19.1
Retail trade	12.8	15.4	18.2	4.3	7.0	1.7	1.2	1.2	28.4
Transport and storage	7.0	9.4	4.3	1.7	2.8	0.4	0.3	0.3	12.9
Finance, property and business services	16.6	13.2	8.5	4.5	5.4	1.4	1.5	1.0	24.0
Community services	16.2	16.6	8.0	6.5	11.2	2.0	0.7	2.0	27.9
Recreation, personal and other services(a)	9.6	12.2	9.5	3.7	3.6	0.8	0.9	1.2	19.0
Total all industries	35.5	34.5	27.1	11.6	16.4	4.0	2.4	3.0	60.2
QUARTERLY MOVEMENT									
Mining	0.8	0.6	2.2	—	1.0	0.3	0.1	—	2.6
Manufacturing	10.2	8.6	7.2	3.5	2.7	1.7	0.1	0.2	15.8
Construction	6.6	6.1	4.7	1.2	3.6	0.8	0.4	0.4	10.9
Wholesale trade	9.1	6.9	5.3	3.5	5.5	0.9	0.2	0.2	14.2
Retail trade	9.3	10.4	14.1	4.4	5.0	1.5	0.6	0.9	21.0
Transport and storage	5.6	7.5	2.8	2.3	2.6	0.4	0.1	—	10.3
Finance, property and business services	16.5	10.8	6.4	7.9	4.4	0.9	0.5	0.5	22.6
Community services	16.5	12.2	8.7	5.0	8.4	2.5	0.3	0.5	24.5
Recreation, personal and other services(a)	8.6	11.9	7.4	2.8	4.3	0.8	0.6	0.3	17.3
Total all industries	31.1	27.0	22.0	12.0	13.8	3.8	1.1	1.3	50.4
ANNUAL MOVEMENT(b)									
Mining	0.9	0.9	2.1	0.2	1.3	0.1	0.4	—	2.8
Manufacturing	6.4	9.1	4.2	2.3	3.5	0.6	0.2	0.6	12.6
Construction	5.1	7.5	4.1	1.3	4.8	0.6	2.1	1.2	11.4
Wholesale and Retail trade	16.2	10.6	8.9	6.3	4.0	2.1	1.1	1.7	23.0
Transport and storage	5.0	4.8	2.1	4.7	2.4	0.3	1.4	0.3	9.1
Finance, property and business services	12.3	6.5	6.5	3.2	5.8	0.8	2.2	1.2	16.9
Community services	7.3	10.5	7.1	4.5	3.4	1.0	1.5	1.0	15.9
Recreation, personal and other services(a)	12.0	6.8	5.5	3.2	3.8	0.9	1.1	1.6	15.8
Total all industries	26.5	21.8	15.9	10.5	10.9	2.8	4.0	3.1	41.2

(a) Excludes private households employing staff. (b) See paragraph 5 in Appendix 1.

TABLE B. EMPLOYED WAGE AND SALARY EARNERS, STATES AND TERRITORIES — PUBLIC SECTOR :
STANDARD ERRORS, JUNE 1994, PERSONS
(^{'000})

Industry	NSW	Vic.	Qld	SA	WA	Tas.	NT	ACT	Aust.
LEVEL									
Agriculture, forestry, fishing and hunting	—	—	—	—	—	—	—	—	—
Mining	—	—	—	—	—	—	—	—	—
Manufacturing	0.8	1.3	0.1	—	—	—	—	—	1.5
Electricity, gas and water	0.1	0.2	0.2	—	—	—	—	—	0.3
Construction	—	0.7	—	—	1.6	—	—	—	1.7
Wholesale trade	—	—	—	—	—	—	—	—	—
Retail trade	—	—	—	—	—	—	—	—	—
Transport and storage	0.5	1.6	—	0.2	—	—	—	0.1	1.7
Communication	—	—	—	—	—	—	—	—	—
Finance, property and business services	1.2	0.3	0.1	0.1	—	—	—	—	1.2
Public administration and defence(a)	2.2	2.2	1.1	1.6	0.6	0.2	0.4	0.1	3.8
Community services	8.0	4.9	4.1	0.6	1.4	0.6	0.1	0.4	10.4
Recreation, personal and other services	1.5	0.1	—	0.2	—	—	—	—	1.5
Total all industries	7.9	5.5	4.3	1.6	1.0	0.6	0.4	0.4	10.7
QUARTERLY MOVEMENT									
Agriculture, forestry, fishing and hunting	—	—	—	—	—	—	—	—	—
Mining	—	—	—	—	—	—	—	—	—
Manufacturing	0.3	0.2	0.1	—	—	—	—	—	0.4
Electricity, gas and water	—	—	—	—	—	0.1	—	—	0.1
Construction	—	0.3	—	—	1.2	—	0.1	—	1.3
Wholesale trade	—	—	—	—	—	—	—	—	—
Retail trade	—	—	—	—	—	—	—	—	—
Transport and storage	0.6	1.8	12.8	0.2	—	—	0.1	0.1	13.0
Communication	—	—	—	—	—	—	—	—	—
Finance, property and business services	0.7	0.1	0.2	—	—	—	—	0.1	0.7
Public administration and defence(a)	0.6	2.6	0.9	0.1	0.1	0.2	0.4	0.2	2.8
Community services	7.9	0.8	2.3	—	0.9	8.7	0.1	0.5	12.1
Recreation, personal and other services	0.4	—	—	—	—	—	—	—	0.4
Total all industries	8.0	3.2	13.1	0.2	1.2	8.7	0.5	0.6	18.0
ANNUAL MOVEMENT(b)									
Agriculture, forestry, fishing and hunting	—	—	—	—	—	—	—	—	—
Mining	—	—	—	—	—	—	—	—	—
Manufacturing	0.5	0.8	—	—	—	—	—	—	1.0
Electricity, gas and water	0.1	0.1	0.1	—	—	—	—	—	0.2
Construction	—	0.6	—	—	—	—	—	—	0.6
Wholesale and Retail trade	—	—	—	0.2	—	—	—	—	0.2
Transport and storage	0.1	0.6	0.1	—	—	—	—	—	0.7
Communication	—	—	—	5.5	0.1	—	—	—	5.5
Finance, property and business services	0.6	0.3	—	—	—	0.1	—	—	0.6
Public administration and defence(a)	0.5	1.1	2.1	0.7	0.2	0.2	—	—	2.5
Community services	2.4	0.9	0.9	0.7	0.3	—	0.2	—	2.9
Recreation, personal and other services	0.5	—	—	0.2	—	—	—	—	0.6
Total all industries	2.8	1.9	2.3	5.5	0.3	0.2	0.2	0.1	6.9

(a) Excludes members of permanent defence forces and employees of overseas embassies, consulates etc. (b) See paragraph 5 in Appendix 1.

APPENDIX 2 - GLOSSARY

Commonwealth government employees. Persons employed by all departments, agencies and authorities created by or reporting to the Commonwealth Parliament, including trading bodies such as banks, airlines and communications bodies. Those bodies run jointly by Commonwealth and State governments are classified to Commonwealth.

Employer units are the statistical units which make up the population from which the sample was drawn (see paragraph 4 of the Explanatory Notes).

Employer unit size. To derive estimates of employer unit size, each of the approximately 7,500 private sector employer units is allocated a size classification based on the number of employees actually reported for the middle month of the quarter. The size classification reflects the size of a business in a particular State/Territory and not necessarily the size of a business Australia wide.

Full-time employees. Permanent, temporary and casual employees who normally work the agreed or award hours for a full-time employee in their occupation and who received pay for any part of the reference period. If agreed or award hours do not apply, employees are regarded as full-time if they ordinarily work 35 hours or more per week.

General government enterprises. Public sector enterprises mainly engaged in the production of goods and services, outside the normal market mechanisms, providing these goods and services to the general public. The costs of operations are often financed from public revenues. e.g. Government Departments.

Gross earnings. Payments to employees before tax and other items (such as superannuation) are deducted. They comprise amounts paid from interstate or overseas; ordinary time and overtime earnings; overaward payments; penalty payments, shift and other remunerative allowances; commissions and retainers; bonuses and similar payments; payments under incentive or piecework; payments under profit-sharing schemes; leave loadings; annual and long service leave payments; sick leave payments; advance and retrospective payments; salaries and fees paid to company directors, members of boards, committees, commissions, councils, etc.; amounts paid to employees on workers' compensation who continue to be paid through the payroll; and severance, termination and redundancy payments.

Industry. Industry is classified according to the *Australian Standard Industrial Classification (ASIC) 1983 Edition* (1201.0).

Institutional sector. Institutional sector is classified according to the *Standard Institutional Sector Classification of Australia (SISCA) 1987 Edition* (1218.0).

Local government employees. Persons employed by municipalities and shires and other local authorities created by or subject to the provisions of local government legislation, such as county councils in New South Wales.

Number of employees. All wage and salary earners who received pay for any part of the relevant pay period. All permanent, temporary, casual, managerial and executive employees are included. Part-time and casual employees who may have worked only a few hours during the reference period are included. Employees on paid leave and those employees on workers' compensation who continue to be paid through the employer's payroll are also included. Casual employees who work on an irregular basis and who were not paid during the relevant pay period, employees on leave without pay, on strike or stood down without pay for the whole of the pay period are excluded.

Part-time employees. Permanent, temporary and casual employees who are not classified as full-time employees as defined.

Public employees. Administrative employees and all other employees of Commonwealth, State and Local government businesses and financial undertakings engaged in services such as railways, road transport, banks, postal and telecommunications, air transport, education, radio, television, police, public works, factories, marketing authorities, hospitals and welfare institutions.

Public financial enterprises. Public sector enterprises actively involved in financial market transactions such as borrowing and lending. Excluded are those public bodies whose funds flow directly to or from general government revenue.

Public trading enterprises. Public sector enterprises predominantly engaged in the production of goods and services with an intention of maximising profits and financial returns with most operating costs being derived from trading activities.

Reference period for the number of employees. The last pay period ending on or before the third Friday in each month.

Reference period for earnings. All pay periods for which the end of the pay period falls within the quarter.

Sector. Public sector includes local government authorities and all government departments, agencies and authorities created by, or reporting to the Commonwealth and State Parliaments. All remaining employees are classified as private sector.

State government employees. Persons employed by all State government departments and authorities created by, or reporting to, State Parliaments, including organisations for which the Commonwealth has assumed financial responsibility, e.g. universities. Following self-government, the Northern Territory and the Australian Capital Territory administrations have been classified to 'State' governments. Employees of State governments employed interstate are included in the estimates of the State in which they are based.



For more information ...

The ABS publishes a wide range of statistics and other information on Australia's economic and social conditions. Details of what is available in various publications and other products can be found in the *ABS Catalogue of Publications and Products* available at all ABS Offices (see below for contact details).

Information Consultancy Service

Information tailored to special needs of clients can be obtained from the Information Consultancy Service available at ABS Offices (see Information Inquiries below for contact details).

National Dial-a-Statistic Line

0055 86 400

(Steadycom P.L. premium rate 25c/21 4 secs.)

This number gives 24-hour access, 365 days a year for a range of statistics.

Electronic Data Services

A large range of data is available via on-line services, diskette, magnetic tape, tape cartridge and CD ROM. For more details about our electronic data services, contact any ABS Office (see below).

Bookshops and Subscriptions

There are over 400 titles of various publications available from ABS bookshops in all ABS Offices (see below Bookshop Sales for contact details). The ABS also provides a subscription service through which nominated publications are provided by mail on a regular basis at no additional cost (telephone Publications Subscription Service toll free on 008 02 0608 Australia wide).

Sales and Inquiries

Regional Offices	Information Inquiries	Bookshop Sales
SYDNEY (02)	268 4611	268 4620
MELBOURNE (03)	615 7000	615 7829
BRISBANE (07)	222 6351	222 6350
PERTH (09)	360 5140	360 5307
ADELAIDE (08)	237 7100	237 7582
HOBART (002)	20 5800	20 5800
CANBERRA (06)	207 0326	207 0326
DARWIN (089)	43 2111	43 2111
National Office		
ACT (06)	252 6007	008 020 608

ABS Email Addresses

Keylink	STAT.INFO/ABS
X.400	(C:AU,A:TELMEMO,O:ABS,SN:INFO,FN:STAT)
Internet	STAT.INFO@ABS. TELEMEMO.AU



Information Services, ABS, PO Box 10, Belconnen ACT 2616



2624800006949

ISSN 0814-6195